

# MINGINUI TREE SANCTUARY and OLD FORT ROAD WALKS

**Topo50 Map:** BG38 Wairapukao & BG39 Ruatahuna

**GPS:** NZTM on WGS84

**How to get to START:** From the police station on the domain get out on to SH1 north to pick up SH5 for Rotorua or head out Broadlands Road to get to SH5

- Stay on SH5 for Rotorua till you have done 54km, about 45 minutes
- At the junction to SH38 for Murupara past Rainbow Mountain go right
- Pass Murupara and over the windy section of road to turn right for Minginui
- Just before Minginui turn off left on Sanctuary Road
- 

**Rough description:** Short descriptions of a couple of very short, generally very easy walks in beautiful forest with a few giants and many birds.

1. The Sanctuary walk takes about 90minutes and has short section of uphill but nothing that really tests the legs or lungs.
2. Old Fort Road recreational area loop walk has very little altitude involved – 81metres of ascent – only covers just over 3.5km and can take one to two hours depending on how fast one walks



Yellow markers are for the Sanctuary Walk whilst the red line is for Old Fort Road walk

## Sanctuary Walk

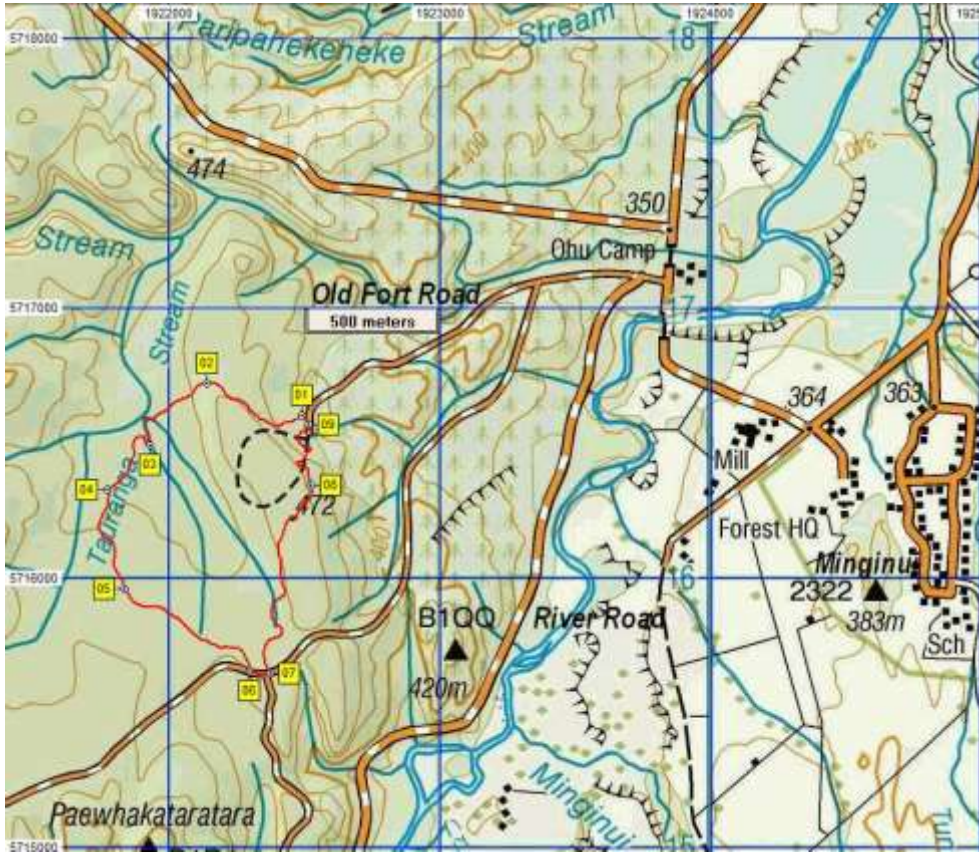
On approaching Minginui there is a clear sign (WP00) on the road showing the access route on Sanctuary Road which is gravel but is in good condition and two wheel drive vehicles can easily pass. At the end of the road there is a camp site with a DoC toilet. The start of the walk is found by going under the arched shelter and over the small bridge (WP02392masl) then immediately turn uphill to the right. At the top the track veers right at a notice about Weta (WP03423masl). The next feature is T-junction (WP04427masl) where the loop track you are on returns – Kaka was spotted here. A fair few minutes can be spent at the next feature (WP05439masl) which is where the night-life of the forest is detailed with the inclusion of a device to reproduce bird-calls. A wooden bench in a very small clearing (WP06481masl) marks the end of the night-life trail with information on Kiwi. The trails wanders on to reach a T-junction (WP07427masl) which is the previously noted WP04 and by going left it is soon downhill back to the start. **NB** GPS trace lost.

Name	Easting	Northing	Alt...	Description
00	1924881	5717040	352	Turn off tar seal just before Minginui to Sanctuary Rd - gravel
01	1924355	5713827	391	Carpark at end of Sanctuary Road - DoC toilet
02	1924371	5713782	392	Cross bridge, turn right uphill
03	1924335	5713690	423	Slight bend with Weta info sign
04	1924258	5713582	422	T-track junction with return loop coming from right
05	1924211	5713306	439	Night-life info with "bird-calls" machine
06	1924465	5712963	481	Seat at end of "night-life" walk with kiwi info
07	1924265	5713581	427	Back at T-track junction going left back to bridge and carpark





## Old Fort Road Loop



### Access

On approaching Minginu bear right then right again to cross a bridge on the gravel road then turn off left as for the Whirinaki Track. At the next fork go right on Old Fort Road – left is River Road to the Whirinaki track. There is a clear parking area at the end with the Recreational Area sign very prominent. There are a few tracks around here and the sign described below is designated the YELLOW route on the notice board in the shelter at the edge of the carpark.



Signs can be challenging as the bottom one is actually yellow and shows the cyclist going backwards.

Name	Easting	Northing	Alt...	Description
01	1922491	5716602	450	Old Fort Road recreation area with DoC toilet. Through shelter and straight
02	1922137	5716723	461	450m (7min); Cross roads track, go straight on yellow marker
03	1921926	5716494	439	900m (15min); Second switchback on upslope
04	1921770	5716329	452	1.19km (21min); Meet larger road going left on "yellow" marker
05	1921834	5715960	458	1.63km (29min); T junction with road going off to right near marker post W8 - go straight
06	1922296	5715657	456	2.24km (39min); End of Glow Worm Rd at T-junction, go left
07	1922371	5715647	460	2.33km (41min); Off left on yellow marker
08	1922523	5716346	459	3.18km (54min); Old trail book-holder and Bang notice about volcanic eruptions
09	1922516	5716572	437	3.51km (59min); Board walk leading back into carpark

To get on the track pass through the shelter and go straight SW to then swing to the NW crossing (**WP02**<sup>461masl</sup>) another track in 6 to 7minutes. Now heading SW downhill cross a bridged stream then the track has a few switchbacks (**WP03**<sup>439masl</sup>) to get up the slope. Next meet a larger road where the confusing "yellow" sign is found (**WP04**<sup>452masl</sup>). The next feature is passing a road going off on the RHS (**WP05**<sup>458masl</sup>) near a marker post W8 before reaching the end of Glow Worm Road (**WP06**<sup>456masl</sup>) and turning left. After 100m go left off this road (**WP07**<sup>460masl</sup>) to meet an old trail book holder and notice titled "Bang" with info on Volcanic Eruptions (**WP08**<sup>459masl</sup>). A few hundred metres later (**WP09**<sup>437masl</sup>) there is a short section of board-walk which leads into the starting carpark.



There are other walks from this location, including the H-tree walk, plus several MTB Trails

Notes:	<ul style="list-style-type: none"> <li>• GPS Garmin GPSmap 62sc</li> <li>• <b>WP</b> = Waypoint as taken by GPS unit</li> <li>• <b>masl</b> = metres above sea level (as recorded by GPS unit)</li> </ul>
--------	---