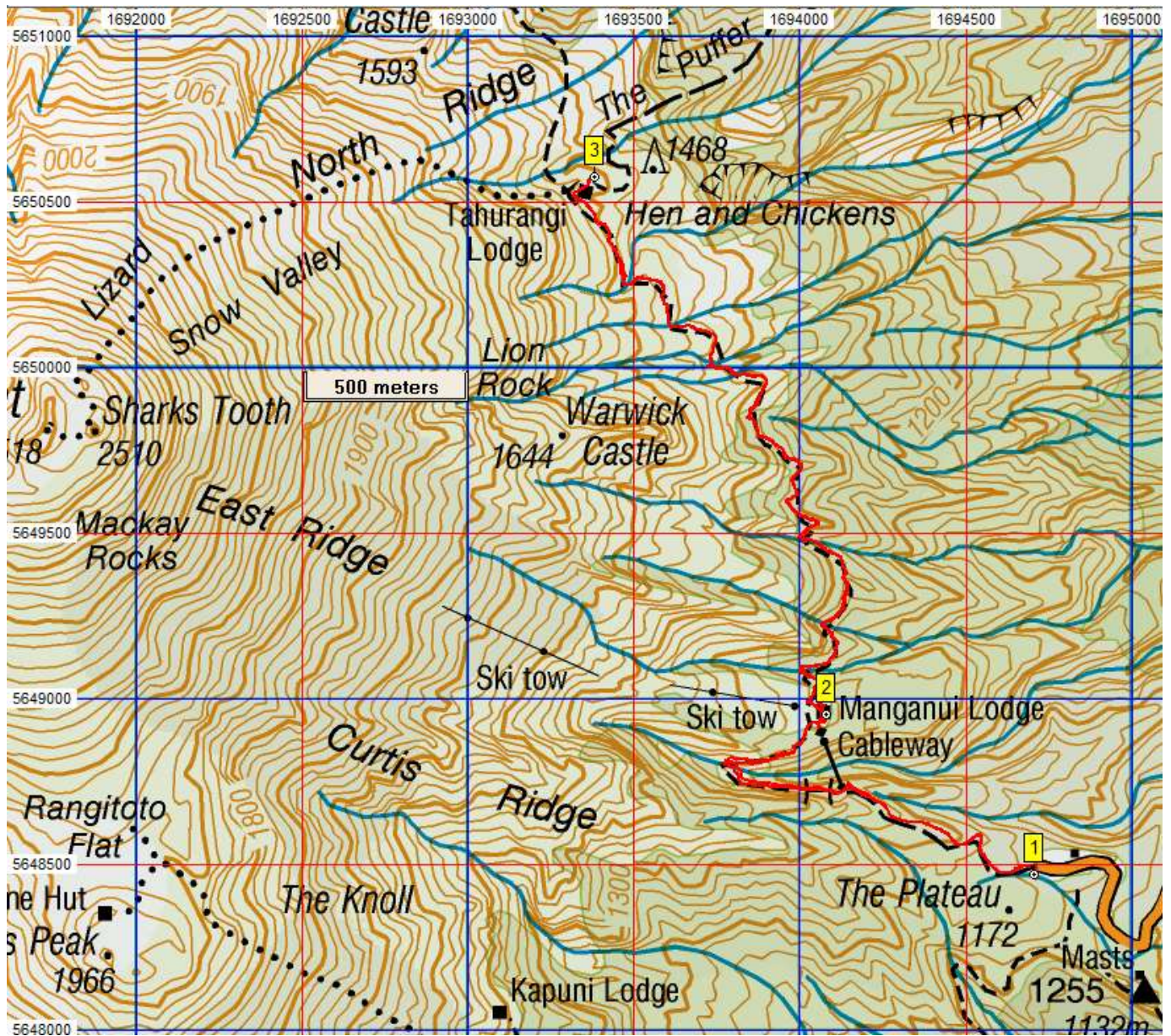
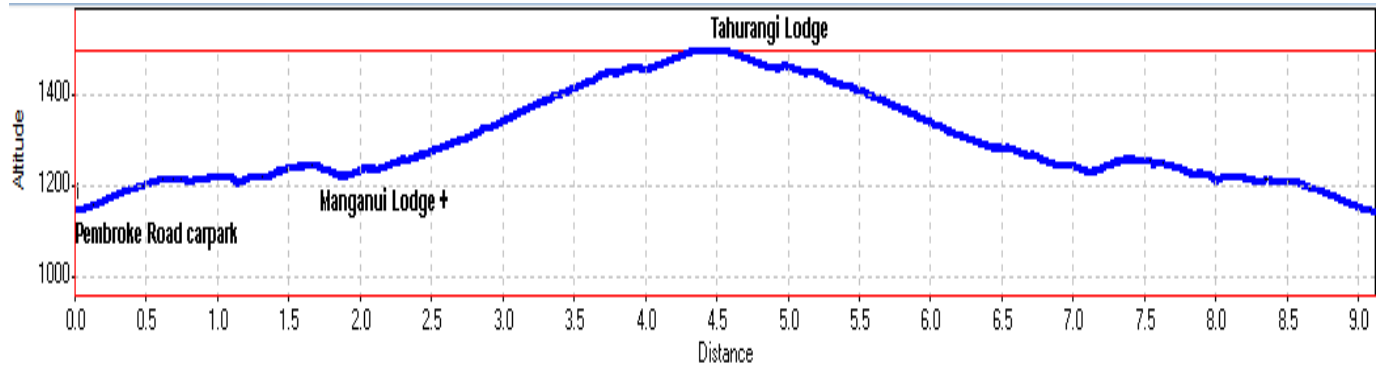


# Mount Taranaki Walks

## 1. Lower Slopes of the mountain from Plateau Road

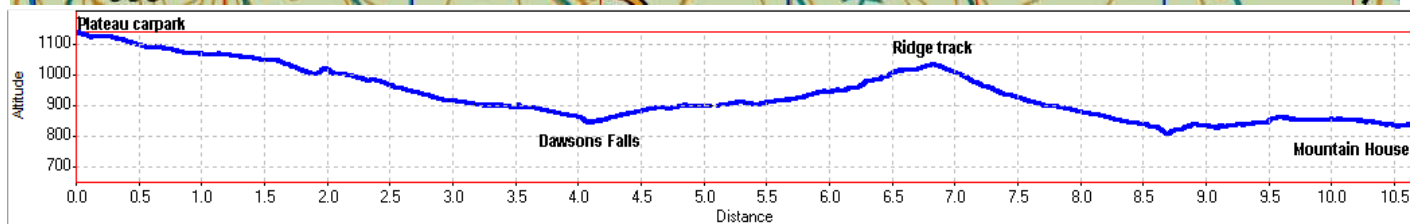
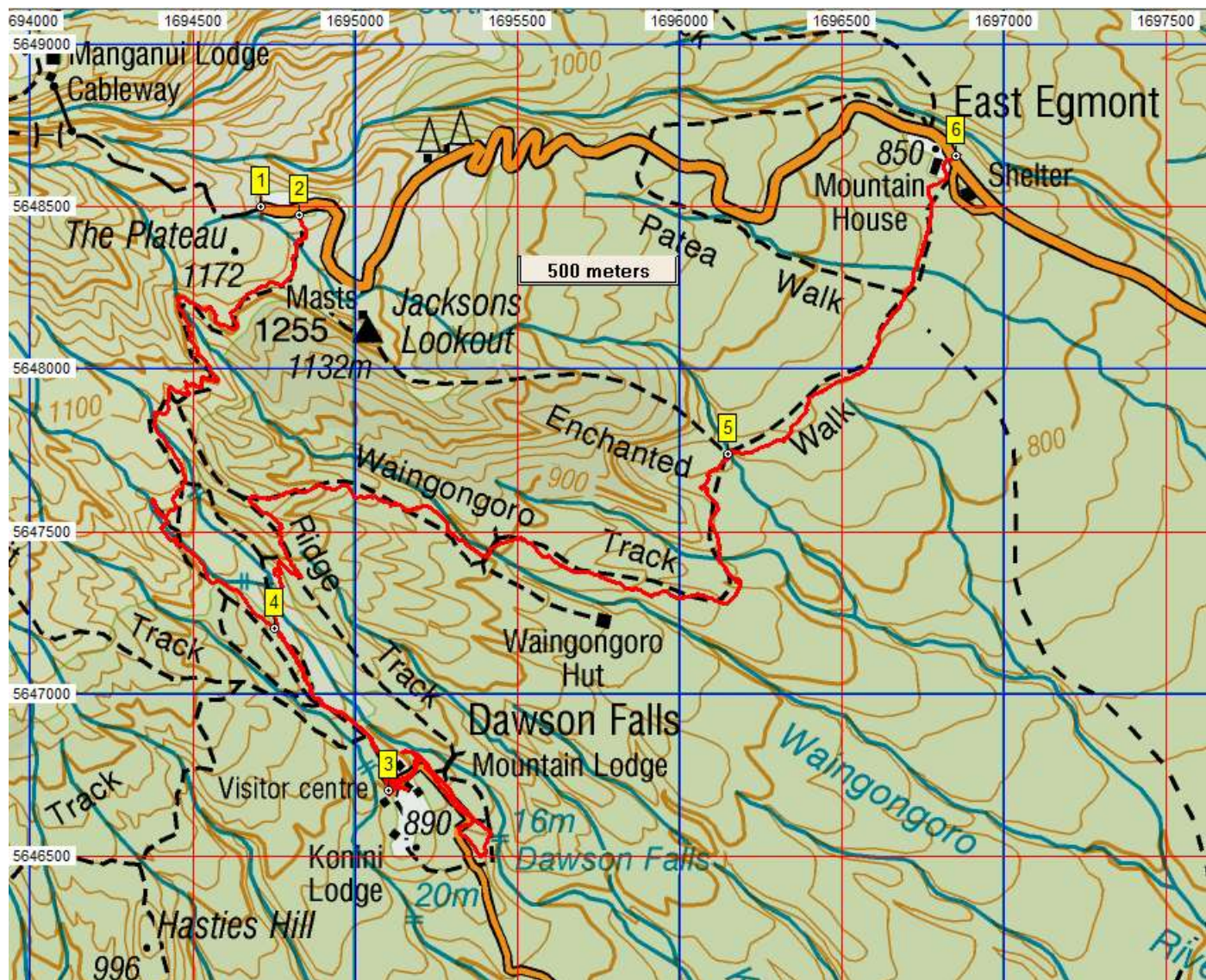


Name	Easting	Northing	Alt...	Description
1	1694705	5648471	1150	Plateau carpark at top of Pembroke Road and start on Mt Taranaki ascent
2	1694079	5648954	1250	1.63km (48min); Manganui Lodge with public shelter and toilets
3	1693380	5650575	1498	4.46km (2:56min); Tahurangi Lodge after gnarly track up. Steep part of Taranaki ascent starts here





## 2. Dawson Falls



Name	Easting	Northing	Alt...	Description
1	1694709	5648501		Plateau carpark at the top of Pembroke Road and start of Mt Taranaki ascent
2	1694828	5648476	1140	Start of Dawson Falls track in Plateau carpark
3	1695103	5646702	902	1:53min (3.49km); Dawson Falls Visitor Centre
4	1694752	5647202	947	2:57min (6.01km); New start to Ridge Track so go right on return leg
5	1696149	5647739	841	4:48min (9.27km); Junction with Enchanted Track
6	1696851	5648658	838	5:21min (10.65km); Pembroke Road with parking near Mountain House