

PAEROA RANGE

Topo50 Map: BF37 Waiotapu

GPS: NZTM on WGS84

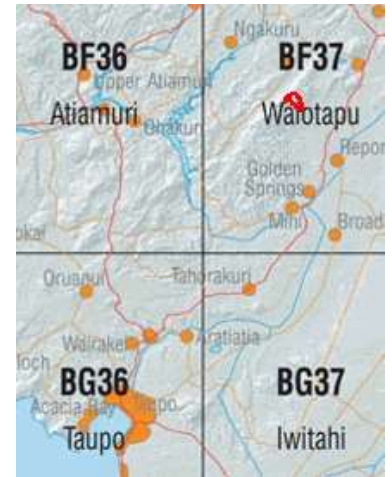
How to get to START: From the police station on the domain go out on to SH1 north

- At Wairakei go on to SH5
- Stay on SH5 for Rotorua passing through Golden Springs
- Pass Butcher, Homestead, Jay, Reparoa then Wharepapa Roads
- Turn left to Hancock Road (WP00) and proceed to
- Locked gate (WP0) to gravel / unmade private road with DoC notice board

Rough description: An “easy” to moderate tramp on private land and permission is required to obtain a key or arrange access through the locked gate – unless walking the DoC marked track that parallels the road. The walk is all on old 4 X 4 tracks through very attractive native bush, has a few testing ascents and several points of interest. As described the walk was done in the reverse direction to what is normally done which meant that is started with a pretty hard ascent.

Detail: The unmade road is dead straight for about 2km then, for the carpark (WP01496masl) bear left to see a sign clearly indicating a clockwise direction is required. Once parked the route was back out of the carpark entrance to follow the road uphill and almost due N. This is a bit of a grunty ascent getting up over 100m in one kilometre to meet a T-junction (WP02616masl). Left leads to Trig 2311 Wharepapa with some earthquake monitoring equipment whilst to the right goes to a very smartly appointed hut (WP03615masl) with tremendous farmland views.

From the hut the track is grassy leading into the bush and wends it way N to NW, the bush is very attractive though there are not too many memorable features to recall but a track junction (WP04646masl) is passed after about one hour. The terrain can be described as hilly with a few, fairly short testing little slopes to climb as direction slowly changes to the west then SW.



The access route follows the main road from Taupo, through Golden Springs to Rotorua. The tramp is the red loop on sheet BF37.



From : 19-Nov-14 08:34:45
To : 19-Nov-14 13:03:22

Time taken : 4:28:37
Total Distance : 10.211 Km
GPS Distance 11.4km
Minimum Speed : 0.003 KPH
Maximum Speed : 6.859 KPH
Average Speed : 2.281 KPH

Minimum Altitude : 495 Meters
Maximum Altitude : 889 Meters
Total ascent 641 metres

As is normally found the more recent GPS devices give a longer distance than when the route is dropped on to the flat map. The GPS device appears to include the increased distance involved in gaining and losing altitude.

The Hut

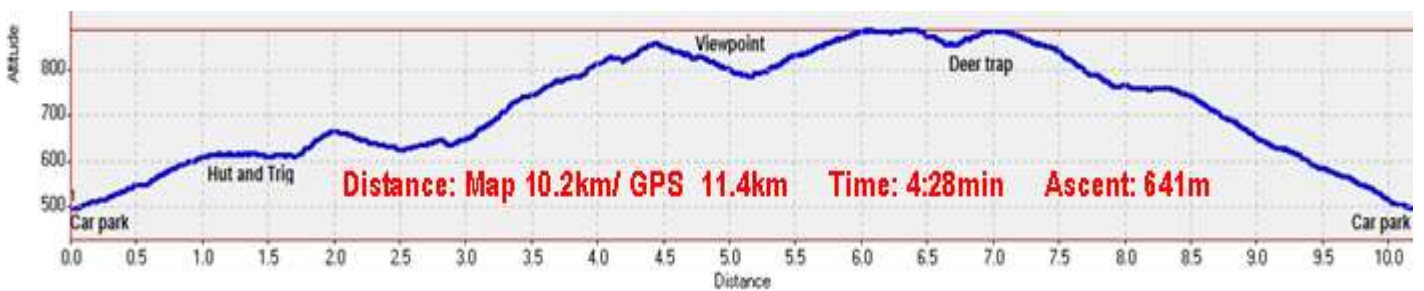
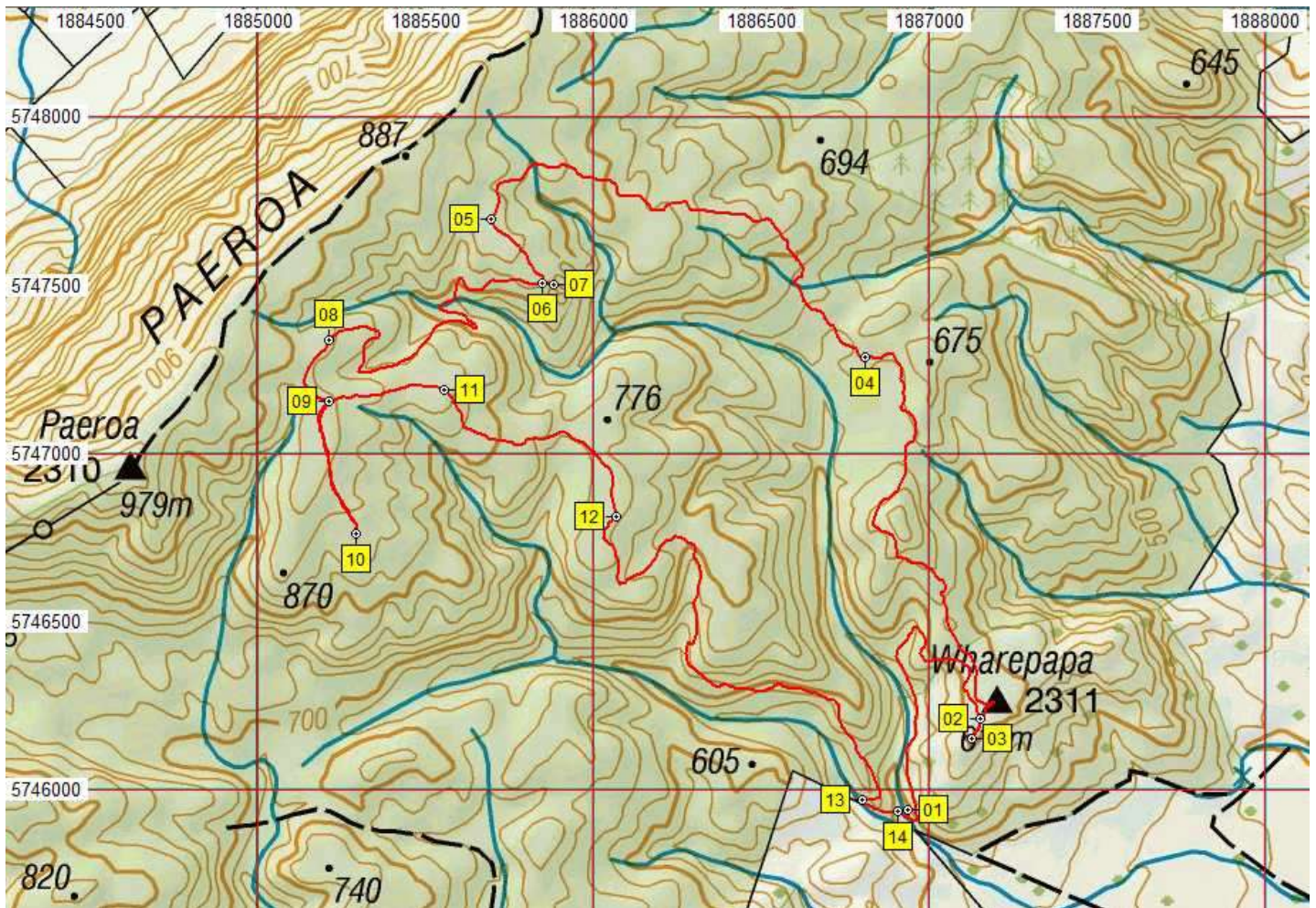


Memorial at hut



Seismic monitoring at the trig 2311





Waypoints NZTM Grid

N...	Easting	Northing	Alt(m)	Description
0	1890722	5744221	310	Handcock Road on SH5
00	1888769	5745089	360	Locked gate to gravel road and DoC notice wrt access etc
01	1886935	5745939	496	Car park with one way loop access / exit
02	1887153	5746210	616	1.1km (21min); T-junction, Left to trig and right to hut
03	1887125	5746153	615	1.2km (23min); Hut on crest with steep fall-offs
04	1886810	5747287	646	2.8km (1:05min); Unknown track entering from the right
05	1885695	5747699	858	4.4km (2:01min); Bend to the left with old milling road off right to NNW
06	1885849	5747507	830	4.7km (2:12min); Junction with left for viewpoint and where ashes of owner scattered
07	1885880	5747504	825	4.8km (2:14min); Viewpoint with hut (WP03) to the SE then long descent to deep valley
08	1885211	5747336	886	6.02km (2:42min); level after long haul up from valley with steep drop-off on LHS on lower section
09	1885212	5747155	884	6.3km (2:49min); Meet Y-junction with right to deer trap
10	1885292	5746761	857	6.7km (2:58min); Deer trap clearing at ramp for loading trapped deer
11	1885554	5747190	847	7.5km (3:40min); Edge of level area and start of steep descent, huge views
12	1886068	5746811	759	8.3km (3:53min); Meet T-junction, go right
13	1886799	5745968	507	10km (4:23min); Bend then level track bordered on the RHS by conifers
14	1886905	5745936	498	10.2 (4:28min); Meet loop track of the carpark

Another small junction (**WP5658masl**) comes in from the right or NNW on a bend after about 2hours walking, the road in question went to the milling area when forestry work was carried out. Ten minutes later another junction (**WP6830masl**) is reached and by going a very short distance on the left branch a wonderful viewpoint (**WP07825masl**) is reached. This is where Arthur Handcock's ashes were scattered and offers vast views over his beloved bush land, including a view of the hut to the SE.

From here a long gradual descent into a deep valley commences and then, of course, an ascent is required up out of the valley, the ascent to the SW starts on quite a rough section of track with steep drop-offs on the left hand side. Level walking is resumed after a fair grunt at around 2hours 45 minutes walking and at an altitude of just short of 900 meters.

Track with drop offs up out of valley



Level walking



After the level section the track dips down to yet another junction (**WP09**^{884masl}) where by going right the “deer trap” is reached. The deer trap is a large clearing with a (now incomplete) deer fence and includes the remnants of the loading ramp (**WP10**^{857masl}) and pound where the trapped deer were loaded on to transport.

Deer trap clearing



Loading ramp



After inspecting the deer trap it is back-tracking to the junction (**WP09**) then heading eastwards for 500metres or so on almost level ground to arrive at a point where a steepish descent commences (**WP11**^{847masl}) on a track that wiggles around but offering constantly changing views. Bear right at the next junction (**WP12**^{759masl}) on a track that passes through quite mature secondary growth – the odd stump of previously felled forest giants can be seen in places. This next fairly steep section of track does obviously suffer from erosion as there are many bunds to cross, the bunds being attempts at slowing surface water flow – quite successfully in places as a few signs of ponding can be seen.

The steep descent ends at a sharp bend in the track (**WP13**^{507masl}) where almost level walking resumes and the track is bordered on the right by conifers. From here it is only a matter of a few hundred metres of gently sloping descent to meet the loop track of the car park (**WP14**^{498masl}).

Start of the final descent



Stump with regrowth through it

