

## RANGIWAHIA HUT and HERITAGE LODGE

Topo50 Map: BL36 Norsewood

GPS: NZTM on WGS 84

**How to get to START:** SH1 south from Taupo with a morning tea stop at Taihape. Turn off in Mangaweka heading for Ruahine on Ruahine Road. Pass through Rangiwahia and follow Te Para Para Road then Renfrew Road to the end where a gated entrance to the Ruahine Forest Park is clearly marked. There is a second gate and after this the track is a bit steep and loose gravel can cause some slippage. Good sized car park at with a DoC toilet.

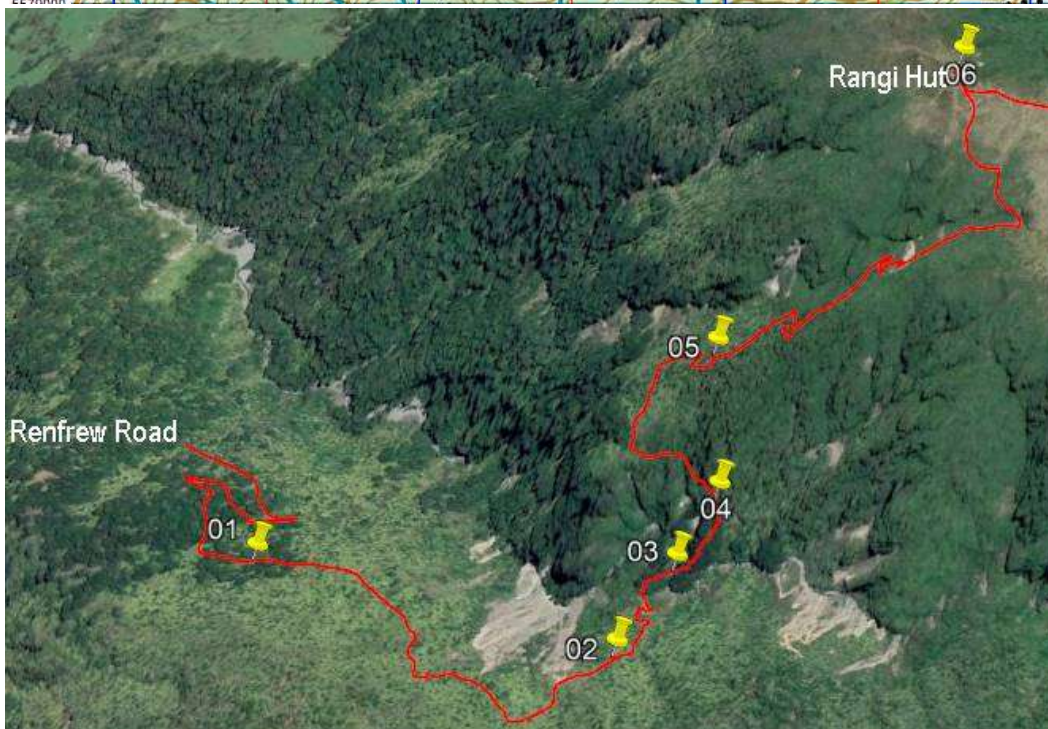
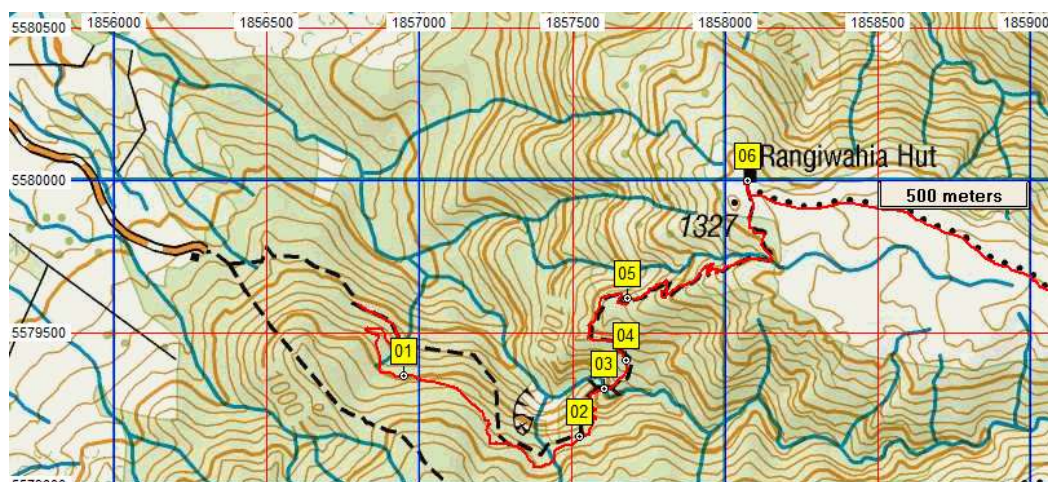
**Rough description:** All eleven set off for start of Rangiwahia Track having lunch on way. Tramped uphill two hours to 13 bunk hut. All settled in for night when a school party of eleven Duke of Edinburgh candidates and leaders arrived with no tents or sleeping mats!!! After sharing our mats and a bit of a mattress shuffle, everyone was accommodated in the hut with a few in a make-shift bivvy outside. Woke up to a good frost and wonderful sunrise and views.

Next morning Iron Gates Hut was our aim via Triangle Hut. With ten hours mostly in river, and with Dave Martin and Denys navigation skills to the fore, we had a very long and tiring day. Some tenting outside the hut saw us wake up in another frost and Denys standing in the river, ear on radio, tuned into the rugby! Morning tramp to road end via Heritage Lodge for lunch, then on to Masterton Holiday Park for night. GPS data collected by Dave Martin using a Garmin GPSmap62 unit and data processed by Austin Hutcheon

### Day 1



The tramp is entirely within the Ruahine Forest park with access off SH1 south of Taihape and via Rangiwahia to the end of Renfrew Road.

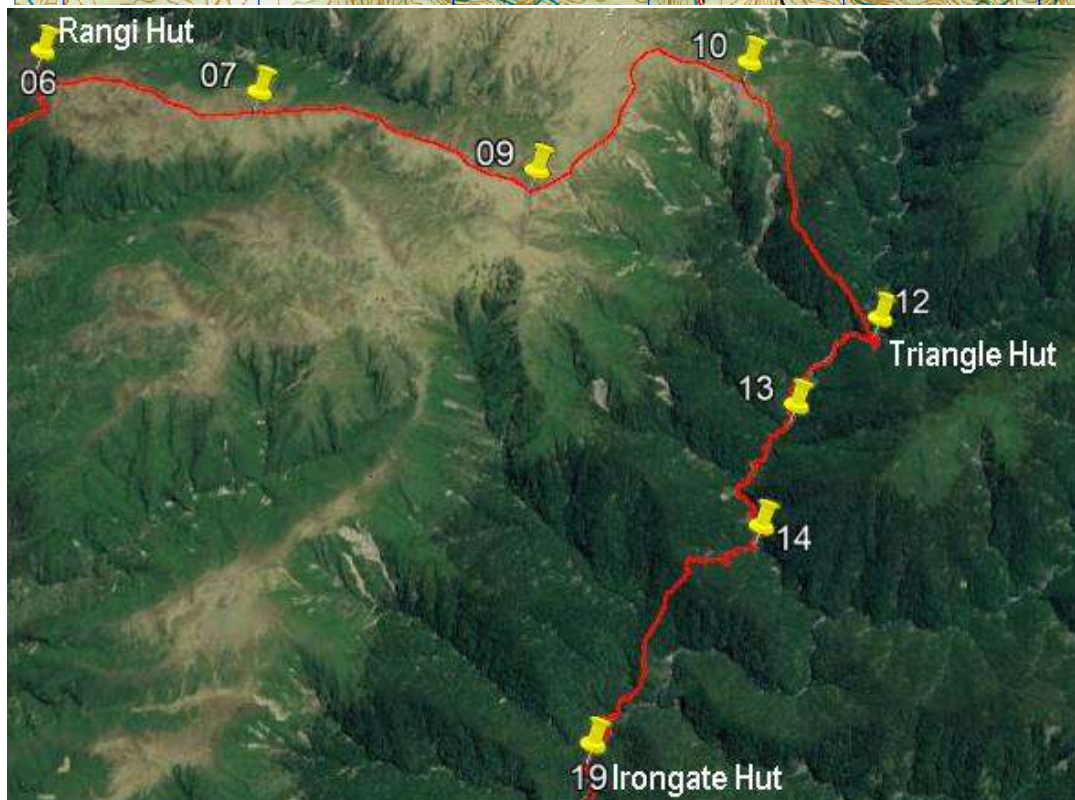
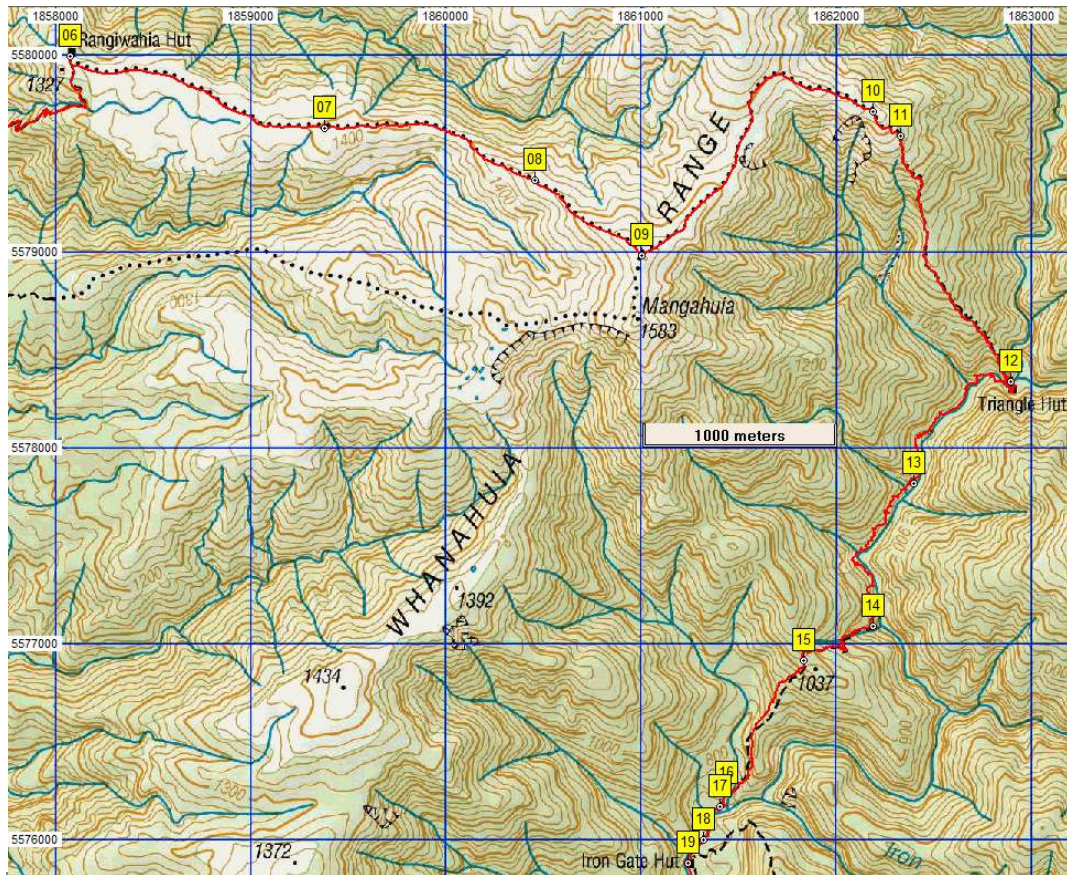


N...	Easting	Northing	Alt(m)	Description
01	1856949	5579359	998	DAY 1: 14min (0.75km);
02	1857524	5579162	1059	42min (1.61km);
03	1857603	5579318	1009	52min (1.91km);
04	1857675	5579412	1039	59min (2.07km);
05	1857681	5579616	1132	1:17min (2.56km);
06	1858073	5580002	1299	1:54min (3.66km); Rangiwahia Hut

Very little data or photographs available at this time, as and when more comes to hand this description will be expanded.



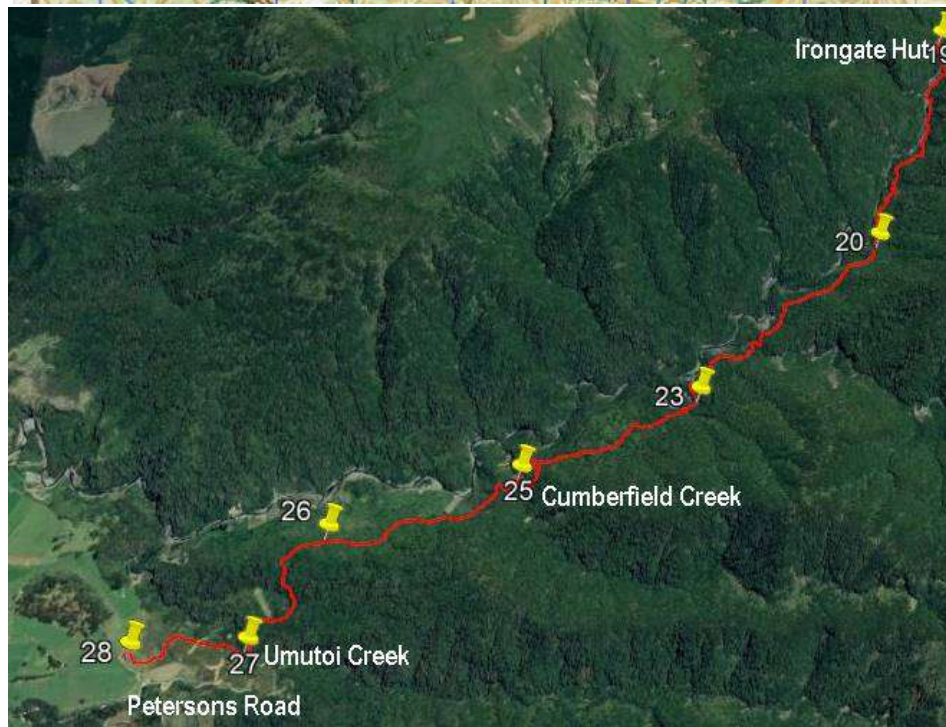
## Day 2



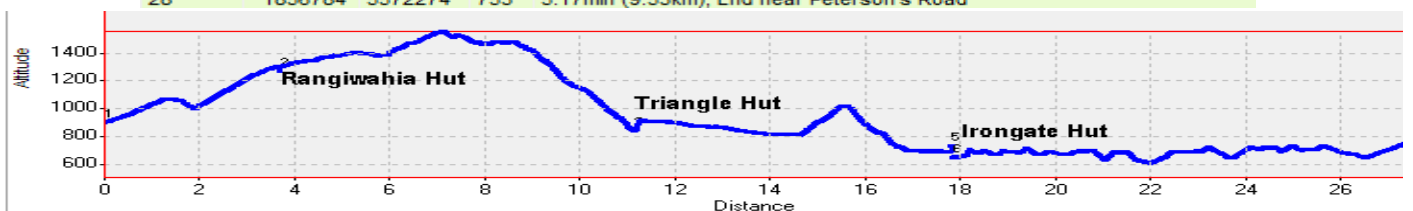
Name	Easting	Northing	Alt...	Description
06	1858073	5580002	1299	1:54min (3.66km); Rangiwahia Hut
07	1859377	5579631	1398	DAY 2; 34min (1.48km);
08	1860455	5579363	1468	1:07min (2.7km);
09	1861004	5578984	1551	1:26min (3.42km); Mangahua Junction, go left to NE
10	1862191	5579711	1421	2:25min (5.30km);
11	1862330	5579589	1353	2:39min (5.54km);
12	1862893	5578336	857	5:01min (7.81km); Triangle Hut
13	1862398	5577818	872	5:51min (9.24km);
14	1862191	5577093	818	6:55min (10.91km); Howlett Creek confluence
15	1861832	5576913	1017	7:45min (11.85km);
16	1861440	5576241	734	8:47min (13.03km);
17	1861406	5576168	707	8:56min (13.19km); Iron Gate Creek
18	1861320	5576001	694	9:33min (13.95km);
19	1861242	5575882	705	9:45min (14.15km); Iron Gate Hut and Junction - head due S on Day 3



Day 3



Name	Easting	Northing	Alt...	Description
19	1861242	5575882	705	9:45min (14.15km); Iron Gate Hut and Junction - head due S on Day 3
20	1860796	5574563	696	Day 3; 59min (2.03km);
21	1860072	5574004	639	1:31min (3.16km);
22	1859802	5573779	681	1:49min (3.68km);
23	1859759	5573662	629	2:09min (4.08km);
24	1859725	5573659	630	2:12min (4.15km);
25	1858782	5573226	653	3:21min (5.83km); Cumberfield Creek
26	1857767	5572905	713	4:39min (5.83km);
27	1857366	5572307	656	4:58min (8.69km); Umutoi Creek
28	1856784	5572274	753	5:17min (9.53km); End near Peterson's Road



Notes: • **GPS** Garmin GPSmap 62sc **WP** = Waypoint as taken by GPS unit **masl** = metres above sea level