

DEEP CREEK

Topo50 Map: BT21 Waiuta

How to get to START: Starting point is in Reefton (Map BS21) with the walk on SH 7 some 11km north of the town. Says picnic site but only if you like sandflies.

Rough description: A fairly hard outing with quite a misleading sign as shown below. Most would assume following a water race might be level walking. The easy part starts when the end of the race is reached.

GPS: NZTM on WGS 84



Red is the tramp route

As shown in the profile a lot of the walking is on the contour and level but the gullies which have to be crossed are really steep - though the steps are most efficient. There are tunnels to be found but not used as they are probably unsafe.

Just past WP7 there is an old white (non-DoC) signboard indicating there is a route via the river back to the highway. This was not followed but apparently it is marked and really is no distance at all if one does not like steps and staircases. The i-centre in Reefton has a lot of local knowledge to help out here.

If you love steps do come along



Very friendly Robin

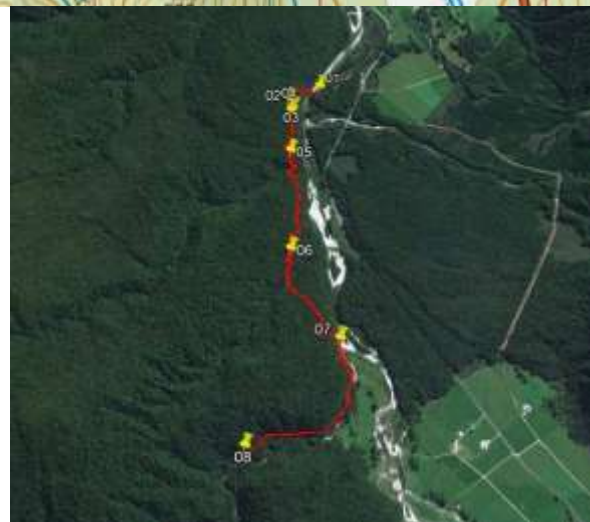
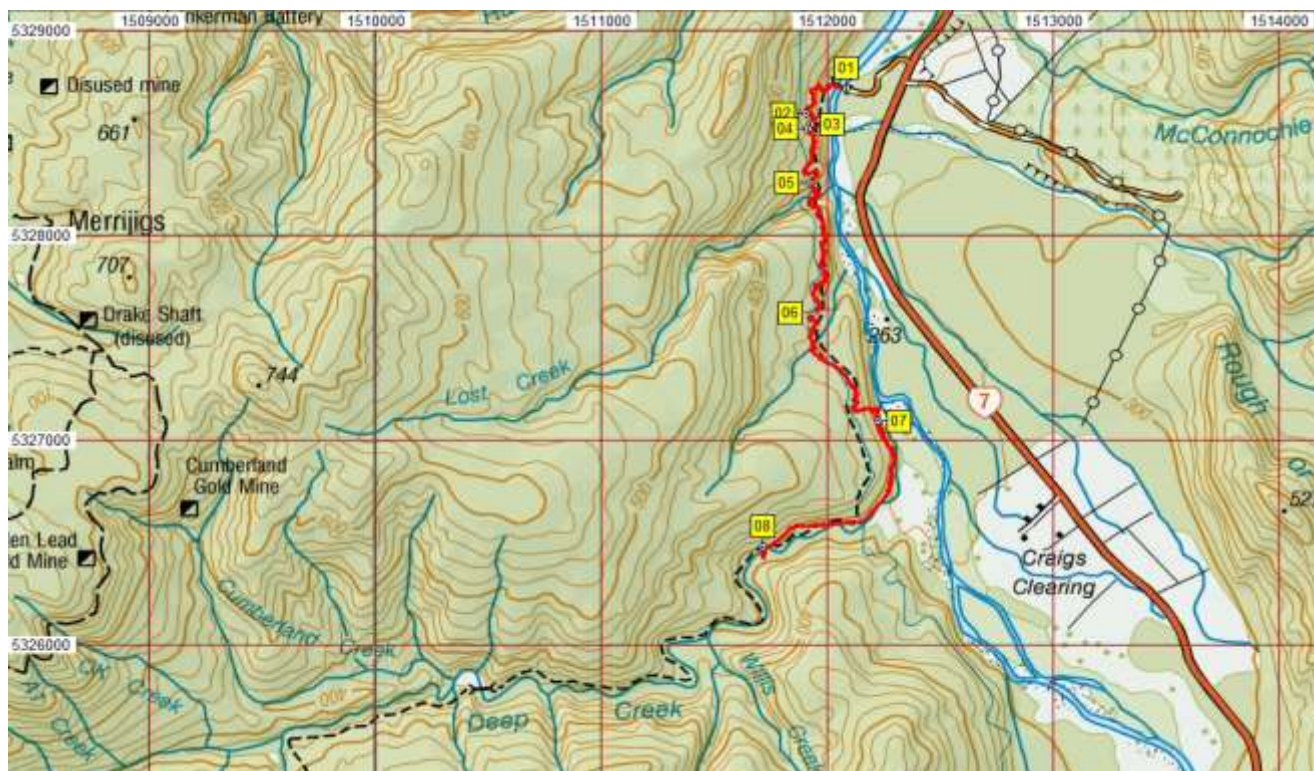


At around 4km there is a DoC sign indicating a dry weather route (in the creek) and a very steep wet weather route as an up-and-over. On the day the walking was too rough in the creek for bad knees and the up-and-over did not appeal.

End of the water race

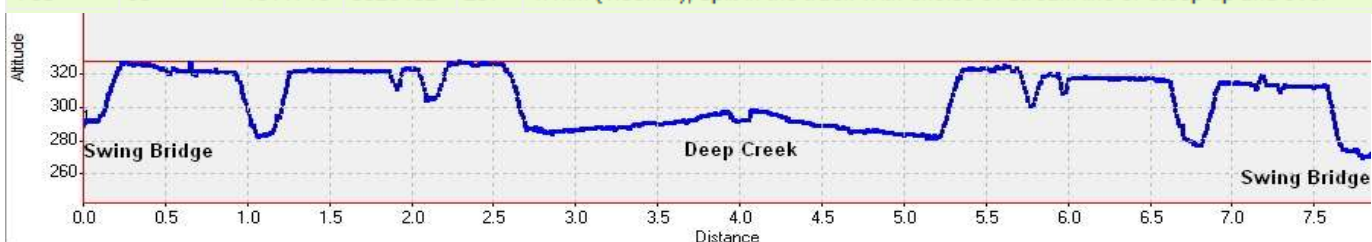
In the creek or up the hill





Black exudate loved by wasps

On Map	Name	Easting	Northing	Alt...	Description
Yes	01	1512085	5328722	290	Inangahua Swing Bridge 11km north of Reefton on SH7
Yes	02	1511906	5328599	326	400m (12min); parallel to water race after steep slopes with endless steps
Yes	03	1511927	5328545	324	470m (17min); water race channel to RHS at entrance to tunnel through hill
Yes	04	1511917	5328521	321	520m (15min); other end of water race tunnel
Yes	05	1511920	5328260	319	940m (26min); major descent on yet more steps
Yes	06	1511937	5327624	320	1.8km (48min); another deep valley to cross with a few dozen steps
Yes	07	1512221	5327097	287	2.8km (1:18min); end of the water race and close to the river (Deep Creek)
Yes	08	1511715	5326482	297	4.1km (1:58min); split in the track with choice of stream line or steep up and over



The track is very well maintained as far as the end of the race, there is fair birdlife with robin, fantail and wood pigeon. Many trees are blackened with the exudate that wasps feed upon and the forest is very lush and dense. Another hour or so would get one to the site of an old mining battery – the Golden Lead! Easier, less steep walks with many historical, mining artefacts are available and the staff at the i-Centre are very knowledgeable and worth consulting.

Notes: • **GPS** Garmin GPSMap 60CSx **WP** = Waypoint as taken by GPS unit **masl** = metres above sea level