

SIGLEY FALLS

Topo50 Map: BJ34 Mnt Ruapehu

GPS: NZTM on WGS84

How to get to START: Exit Taupo southwards on SH 1 to Turangi:

- From Turangi there is a choice of two routes but the aim is to get on to SH 47 heading for Whakapapa
- The map opposite shows going via SH1 and turning right on to SH46 passing Lake Rotoaira then left on to SH47
- Pass the turn off to Whakapapa at 95km in 1:10min
- Turn left on to SH 4 at National Park in 1:30min and 104km
- Turn off SH49 left for Ohakune at 129km in 1:45 min
- Enter Ohakune in 1:50 min, cross the bridge then turn left into Ayr Street at 137km (This is the second road on the left after entering town)
- At a mini-roundabout go left into Goldfinch Street then under the bridge
- Convenient public toilets on the left at 140km
- Drop trampers at carpark for the Round the Mountain track on RHS (WP01) refer topo map image

Distances and times are taken from the Police Station in Taupo and the route can be deciphered on the map on the right. The BLUE line is the road from Taupo, the RED line on BJ34 is the tramp route whilst the GREEN line is the pick-up access route.

Rough Description: A fairly hard A to B day tramp which is mainly off track. There is a pleasant walk mainly on tourist grade track from Mountain Road on the Round the Mountain Track in as far as the Waitonga Falls then there is board walk and normal tramping track in as far as the bridge on the Mangaehuehu Stream. Whatever instructions are being followed it is essential to ensure the correct stream line is being followed – a simple check is to use a compass and determine the direction of flow – the correct stream has a flow bearing of 201 degrees magnetic.

Some of the features in “verbal” descriptions do fit other stream lines in the area so make sure the Mangaehuehu is followed. From here on the bush is very thick, expect skin-removal if not wearing long sleeves! Basically the stream line is shadowed, crossing over to the opposite bank a few times and passing three waterfalls – however the falls are not easy to photograph. After the Sigley Falls the last stream crossing is made on to the true left bank and basically a magnetic bearing of 180 degrees is followed through featureless, dense bush with endless windfalls until the gravel road is reached. This is not a tramp for the faint-hearted or those without ample navigational skills and confidence.

Detail: From the car park on Mountain Road (WP01^{1152masl}) head E then SE on the Round the Mountain Track on tourist track soon to cross a relatively new bridge. Within 25 minutes the junction (WP02^{1242masl}) to the old Blyth Track heading SW is passed. Soon there are wonderful views of the mountain on the left from sections of boardwalk before a long staircase down to a viewpoint (WP03^{1164masl}) for the Waitonga Falls – this makes a good refreshment stop. Just over an hour's walking reaches the junction (WP04^{1218masl}) for the Blyth Hut with the track to the hut heading NE.

There are a few bridges to cross with the target bridge (WP05^{1150masl}) on the Mangaehuehu Stream being reached in about 1:45 minutes – if no GPS is available then check in which direction this stream is flowing (201 degrees magnetic).

Boardwalk section

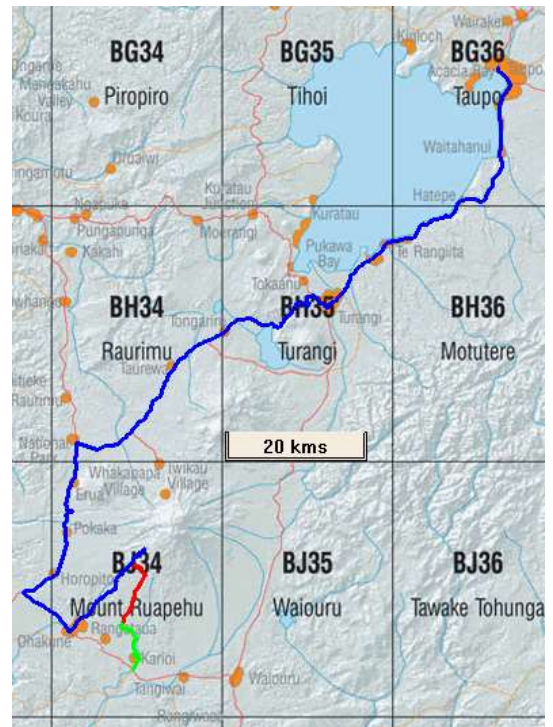


Do not cross the bridge but stay on the true right bank and find a way through the thick scratchy bush heading SW then up a small bluff (WP06^{1137masl}) to continue SW. By continually looking around a large boulder in the stream or on the true left bank can be spotted with a few stones on top as a marker cairn (WP07^{1115masl}). Cross over to the left bank at this point – possible wet feet. This is just above the first waterfall. Fifteen minutes later a small side stream is crossed (WP08^{1095masl}) with one stride and twenty minutes later the second waterfall (WP09^{1058masl}) is heard then seen on the right hand side.



View of Waitonga Falls

Views of this one are not too bad but still not easy to photograph. Within minutes on the left bank a small recovering landslip (WP10^{1049masl}) area is crossed with no difficulty. Soon after this the river edge is approached (WP11^{1038masl}) and this makes a good lunch spot. If one looks around a small cairn can be seen on the opposite bank indicating that someone must have used this as a crossing point to get back to the right bank but stay on the left bank for about another hour. The actual Sigley Falls (WP12^{1009masl}) are arrived at in a bit over 4hours and the stream has to be crossed again back to the true right bank. The crossing is easy after having a look at the very abrupt bluff edge over which the water pours, but it is not easy to get good photographs.

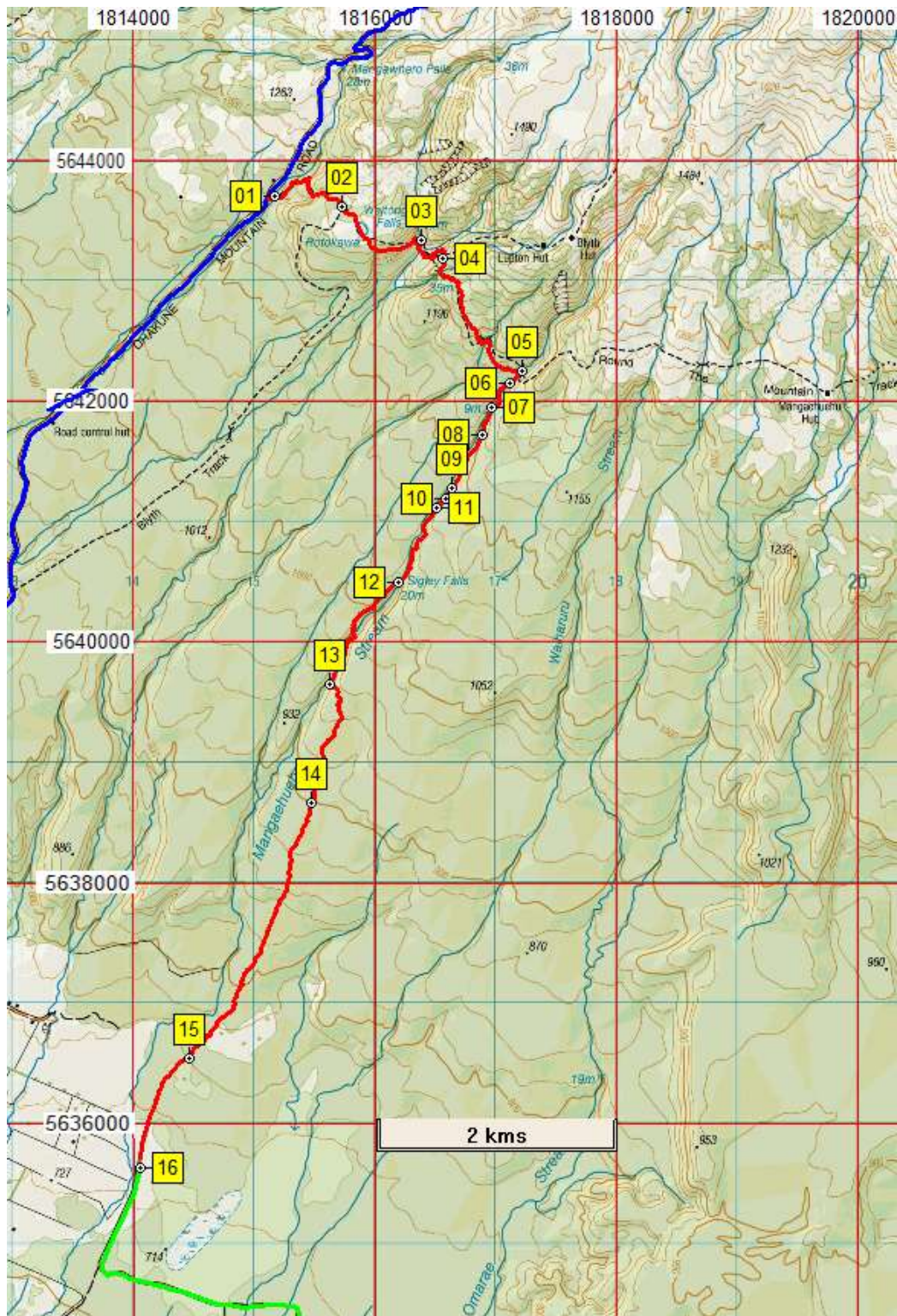


GPS Data

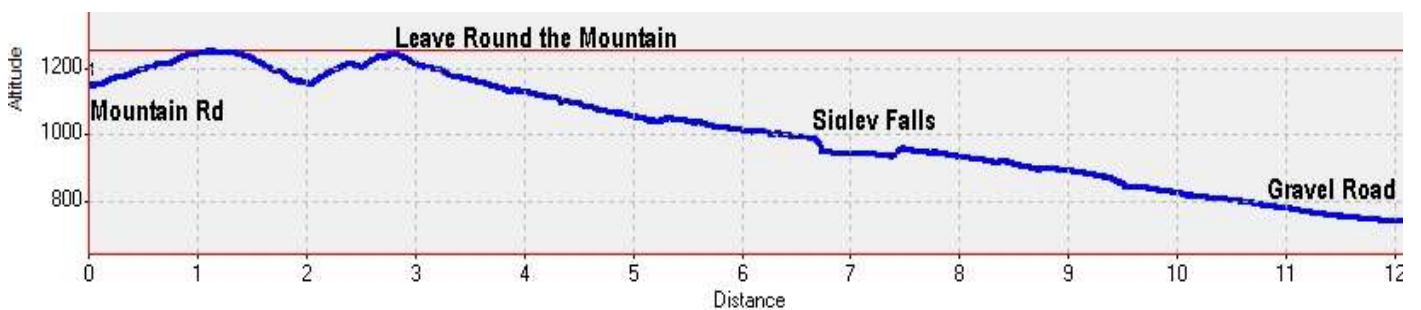
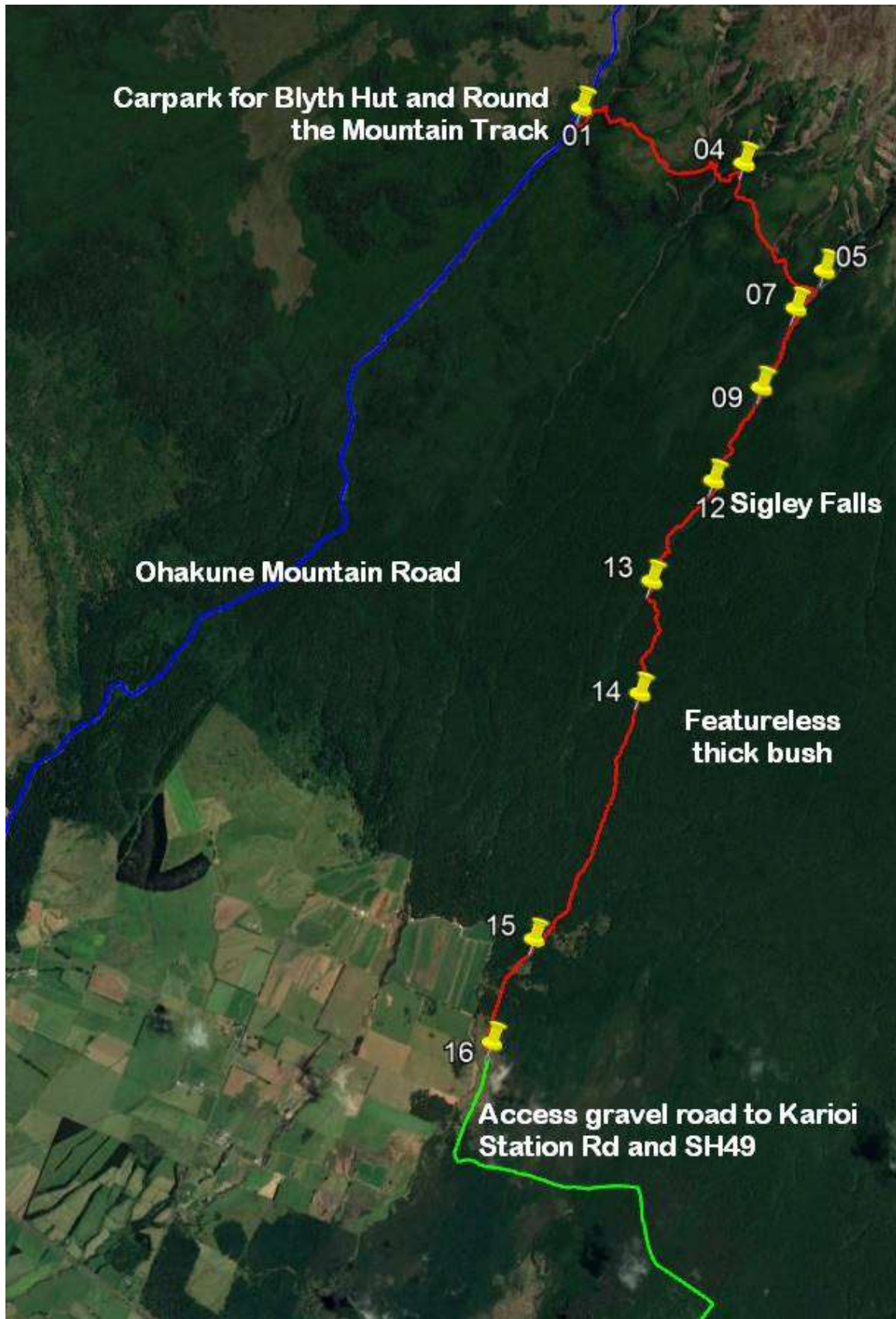
From : 13-Jan-16 09:51:40
To : 13-Jan-16 18:37:58

Time taken : 8:46:18
Total Distance : 12.156 Km
GPS distance 16.09km
Minimum Speed : 0.025 KPH
Maximum Speed : 7.882 KPH
Average Speed : 1.386 KPH

Minimum Altitude : 733 Meters
Maximum Altitude : 1253 Meters
Total ascent 307metres



Name	Easting	Northing	Alt(m)	Description
01	1815175	5643708	1152	Start of the Round-the-Mountain track heading East from Mountain Road
02	1815718	5643621	1242	25min (0.93km); Junction with Old Blyth Track heading SW
03	1816388	5643335	1164	52min (1.95km); View of Waitonga Falls after boardwalk then staircase down
04	1816566	5643181	1218	1:08min (2.40km); Junction with Blyth Hut to the E
05	1817224	5642252	1150	1:43min (3.77km); Mangahuehu Stream head down stream to SE on true right bank
06	1817115	5642159	1137	1:57min (3.90km); Very thick bush then steeply up small bluff - up and over
07	1816966	5641944	1115	2:15min (4.19km); Obvious cairn on rock just above first fall, cross to true left bank
08	1816886	5641720	1095	2:30min (4.46km); Cross small side stream
09	1816641	5641279	1058	2:53min (5.0km); Above and passing second waterfall
10	1816578	5641185	1049	3:00min (5.10km); Small landslip area
11	1816502	5641109	1038	3:14min (5.22km); On river edge for lunch, cairn indicating some had crossed here. Stay on left bank
12	1816195	5640495	1009	4:13min (6.14min); Sigley Falls, NO easy view of actual fall as so abrupt. Cross to true right bank
13	1815818	5639645	940	5:22min (7.40km); Cross back to true left bank after long then steep descent
14	1815479	5638672	900	6:23min (8.61km); Endless thick bush and windfalls, very slow progress (Vodafone cover)
15	1814457	5636541	767	8:24min (11.21km); Meet old gravel road and head SW
16	1814051	5635639	736	8:46min (12.16km); Parking place before end of Rangataua Road (not suitable for cars beyond here)





Second Waterfall

After crossing above the Sigley Falls to the true right bank again the task is to get down off the high ground back down to the stream line, this takes time until the slopes ease enough to allow a descent which is safe and it takes about an hour. This crossing (WP13940masl) is slightly harder and often people can take a dip so be careful.

After crossing the stream it is necessary to get up the steep slope ahead on the true left bank and, once up, the terrain is virtually flat with very few features to aid navigation. For some this can be a scary area (WP14900masl) and progress was about 1km per hour due to dense bush and endless windfalls to work round or climb over. It is essential to keep the group together as without a compass or GPS, especially if the sun is not shining, knowing where North is not easy. Be aware that at the right time of year there are aggressive wasps and their sting is really painful.

Almost two hours are spent heading on a bearing of about 180 degrees magnetic to eventually pass through an area with regrowth following cultivation and hit the gravel road (WP15767masl). Walking to the S for about one kilometre reaches the point where transport should be parked and waiting (WP16736masl).



Above Sigley Falls

Pick up point at tramp end



- From the drop off point return downhill into Ohakune and follow the road (SH49) for Waiouru for about 7km
- Turn left on to Kariori Station Road which is tar sealed and highlighted in lime green on the above map
- Cross the railway and turn left paralleling the railway on gravel road then round a sharp bend on to Rangataua Road heading NNW then NW as shown on the map
- The gravel road is suitable for most cars though there are a few dips with potholes, a few distinctive turns plus the odd junction joining
- Reasonable car parking places (WP16) can be found at 10km up the road from the SH turn-off
- The gravel road continues well past the point shown on the map and vehicles with reasonable clearance can proceed much further than shown.

Notes:

- **GPS** Garmin GPSMap 62sc
- **WP** = Waypoint as taken by GPS unit
- **masl** = metres above sea level