

Te Puia Lodge

Topo50 Map: BH37 Rangataiki & BJ37 Kuripapango

NZTM GPS: NZTM on WGS84

How to get to START:

- Exit Taupo on **SH5** for Napier.
- 114km turn right to Glengarry Road
- Turn right to Puketitiri Road (Heritage Trail)
- At the junction to Whittle Road turn right to Pakatutu Road
- Branch off left from Pakatutu onto Makahu Road and go right to the end of the road where camp sites will be found along with signs for the Mangatutu Hot Springs plus a shelter with DoC info boards

NB If you are a nervous driver get someone else to drive as this is not a particularly easy drive on steep gravel roads with blind bends and huge drop offs. If you have a handheld GPS download the Te Puia Access GPX file and follow the route on your GPS.

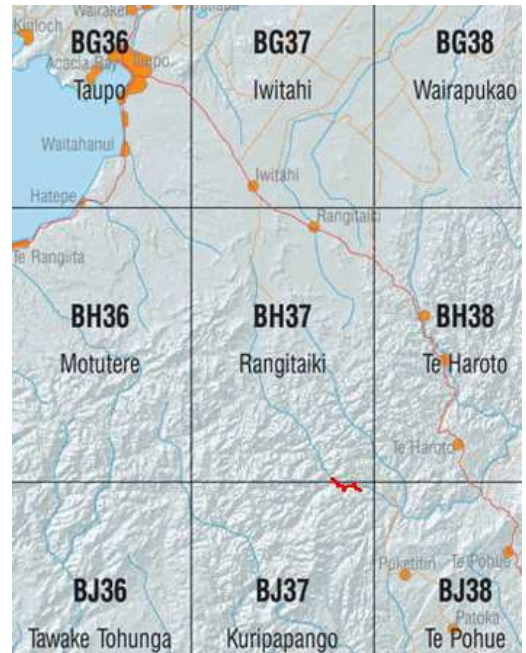
Rough description:

A long 3 hour drive for what appears in the DoC description to be a short two and a half hour tramp in the Kawekas into Te Puia Lodge. DoC's info includes:

- Te Puia Hut provides a great overnight tramp for families with children or new trampers.
- Easy walk from road end 2-3 hours
- Bookings not required – first come, first served
- Facilities include cooking, heating, mattresses – 26 bunks
- The hut can be busy or full on weekends, holidays and during the roar (March–May)
- Makahu Road may be closed in times of heavy rainfall

On arrival at the shelter it is well worth reading the various notices especially the one that gives info on the track type. **To quote:** *Challenging day or multi day tramping / hiking. Track is marked but mostly unformed with steep, rough or muddy sections. Suitable for people with good fitness. Moderate to high level backcountry skills and experience including navigation and survival skills required. Tramping / hiking boots required.*

So DoC on-line info does not totally tie in with the local info supplied but, that said, it is a great walk with a fair amount of challenge and when there a 4 year old girl walked in for the night with her family. The walk inwards does feel harder than outwards due to the fact that the further in you go the more ascending there is – refer the walk profile opposite.



Tramp location is the red line on the junction of sheets BH37 & BJ37



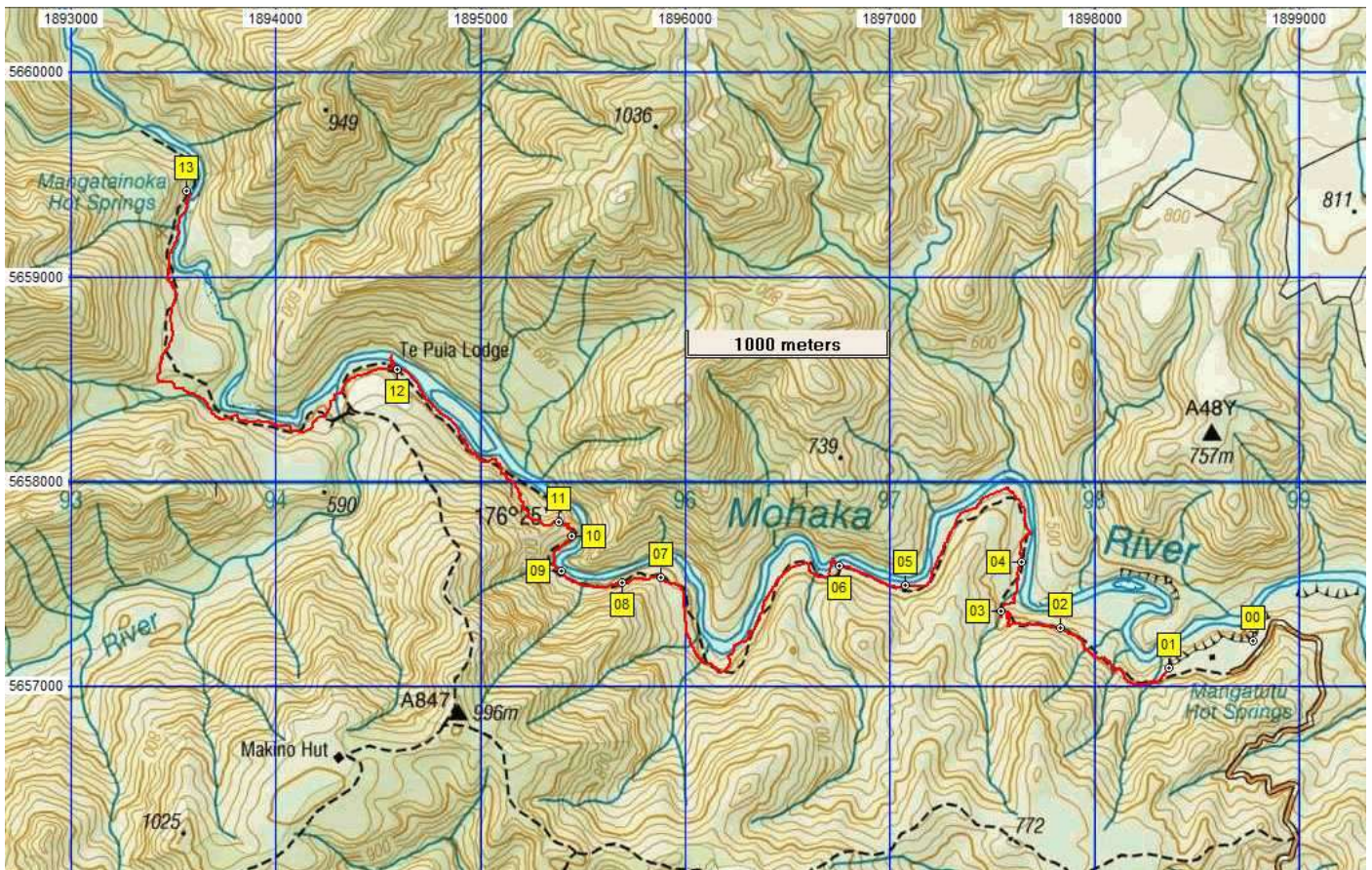
Tricky walking

The walk in took over 4 hours but outwards was just over 3. If energy is available then a easy post lunch stroll from the lodge gives access to the Mangatainoka Hot Springs for a soak. After dark a ten min stroll upstream is rewarded by the site of glowworms near the swing bridge.



Te Puia Lodge

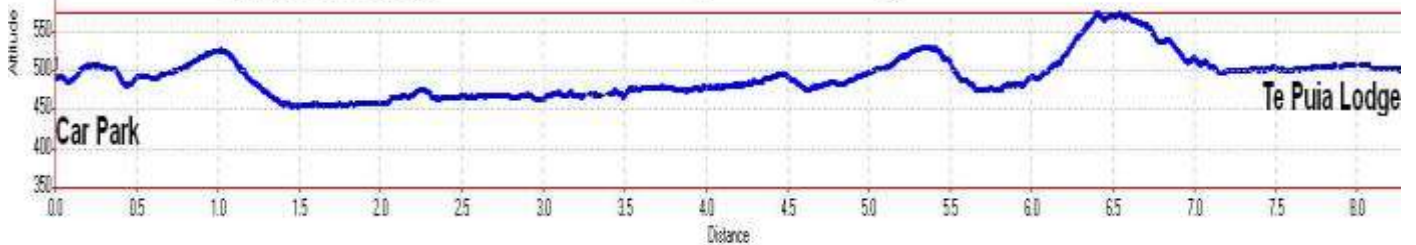




Distance GPS 8.28km

Profile from car park to Te Puia Lodge

Total ascent 371metres



N	Easting	Northing	Alt	Description
00	1898776	5657223	482	Mangatutu Hot Springs for a soak before or after getting to Te Puia Lodge
01	1898363	5657092	493	Carpark with DoC toilet and info for Te Puia at end of Makahu Road. Follow signs for water supply
02	1897833	5657284	505	0.81km (19min); Good track in forest with huge rock on RHS
03	1897541	5657365	472	1.29km (32min); In side valley after long tricky descent then walk parallel to river almost due N
04	1897642	5657607	456	1.61km (42min); Open bush / grassy flats possible camp spots but NO FIRES warning
05	1897075	5657490	464	2.85km (1:06min); Small wooden bridge with hand-rail, easy pleasant walking
06	1896753	5657591	466	3.19km (1:14min); Huge rocky bluff promontory - impressive and walking becoming harder
07	1895878	5657533	517	5.18km (2:19min); Near the top of very long steady drag uphill, some tricky footwork
08	1895692	5657505	527	5.43km (2:27min); Very steep tricky descent including steps
09	1895392	5657563	480	5.83km (2:40min); Huge bluff with narrow rocky ledge path - care required
10	1895442	5657731	507	6.11km (2:49min); Long steep meandering drag up wards with several tricky spots
11	1895380	5657803	573	6.39km (3:05min); On top after long hard ascent - on map ascending to W of the mapped track!
12	1894594	5658550	502	8.28km (4:43min); Te Puia Lodge after final km or so of easy forest track
13	1893561	5659420		2.7km (1:18 Min); Mangatainoka Springs

- **GPS** Garmin GPSmap 62sc
- **WP** = Waypoint as taken by GPS unit
- **masl** = metres above sea level