

## TE TUHI to WAIRERE FALLS

Topo50 Map: BD36 Lower Kaimai

GPS: NZTM on WGS84

**How to get to START:** As this is well outside the Taupo area the first step is to head North on SH1 towards Rotorua then:

- Stay on SH1 at Wairakei by going left 12 minutes
- Pass Kinleith Mill in 45 minutes then through Tokoroa Town
- Pass through Putaruru on SH1 in about 1 hour
- Go right on to SH28 in 1:05 minutes
- Pass T-junction to SH5 for Rotorua in 1:10 minutes
- In Tirau turn right on to SH27 then pass over SH29 1:20min
- In Matamata turn right into Burwood Road just before the rail-crossing chicane 1:25 min
- Straight ahead on Tower Road at small round-about passing the Tower on the way
- Turn off right in 1:30 mins at sign for Wairere Falls
- Turn left in another 3 minutes with Wairere Falls 7km sign
- Right into Te Tuhi Road in a further 3 minutes and go to end of asphalt in 1:45 – 2 hours
- Drop trampers at start of gravel road (**TW01**) and pick-up at **TW34** on Goodwin Road

**Rough Description:** As indicated above it takes almost 2 hours to drive from Taupo to the car park (**01132masl**) at the end of Te Tuhi Road; all times are taken from Taupo Police Station on the Domain. The walk is best described as a hard grunt uphill followed by a moderate undulating walk through superb broad-leafed, mainly beech, forest followed by a knee trembling descent back down to the car park at the end of Goodwin Road (**3051masl**). On the way there are fantastic views from above Wairere Falls (**23407masl**) plus great views of the falls (**25272masl**) The descent can be made “exciting” if the old Maori Trail down is followed – not recommended for the wary or unfit.

**Detail:** From the drop-off point (**01132masl**) walk SW on the gravel road up through farmland coming to a gate within 10 minutes with a stile over the fence. Minutes later follow the fence line rather than the road as this cuts the corner bringing you back to the road and another stile in about 18 min total. The route is marked with orange triangles so easy to follow. It is quite a grunt up through all the farmland then there is a steep little descent to cross a stream line (**06301masl**) where you enter the forest. One of the “gruntest” 30 minute ascents then starts through superb broadleaf forest passing one small track joining from the left about halfway up.

For the next four hours there are not really many features to note apart from the superb forest and several stream line crossings but there is a track junction at about 2:15 min walking when you take the left branch and head North. There is one small valley filled with windfalls (**18439masl**) at just over 4 hours walking so care must be taken to get into this valley through the windfalls and re-locate the track.



There is then a marker post at a junction (**20432masl**) at 4:30 min where you go left. Twenty minutes later yet another marker post (**21421masl**) indicates where the North Track crosses your line as you head SW.

From here on the track gets a bit muddy and indistinct but soon there is the odd bridge / bit of boardwalk and a T-junction is arrived at – going right here for a couple of minutes takes you to a platform above the Wairere Falls.

The real descent now commences and it can be tiring but it is quite safe with many well-made steps, yet another falls viewing-platform (**25272masl**) then a massive staircase to descend.

The latter part of the track has a few bridges and boardwalk through bouldery areas below some bluffs and the end is reached in something around 6 hours having covered over 14km plus ascended / descended about 500 metres.

On the descent it is possible to take a short cut by using the Old Maori Trail from **24** down to **29**. However this route is not recommended unless you are very sure footed, plus have strong hands and arms, since the path is not maintained and use of trees and vegetation is often the only safe way of descending some of the slippery slopes.



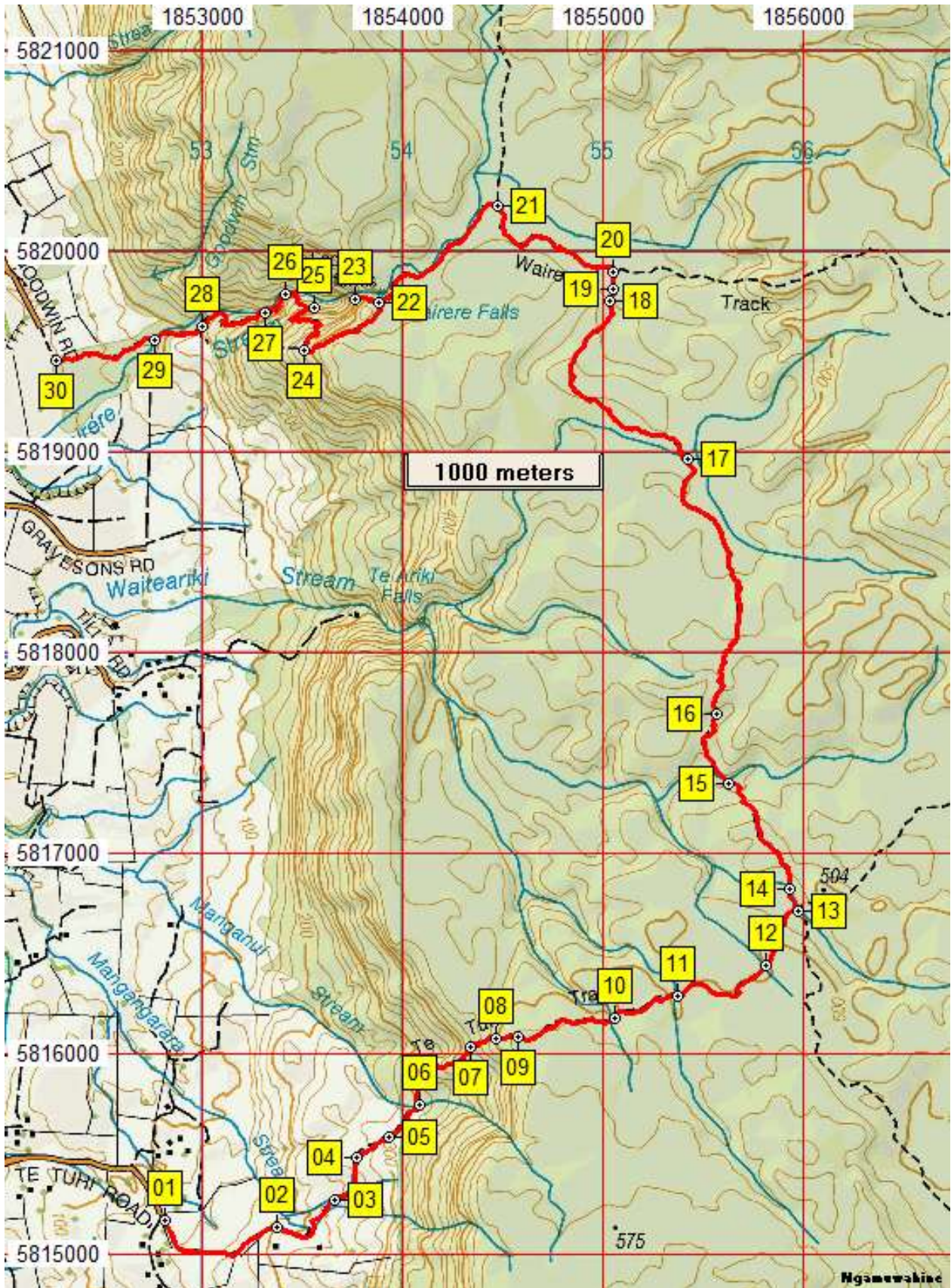
### Farmland stile

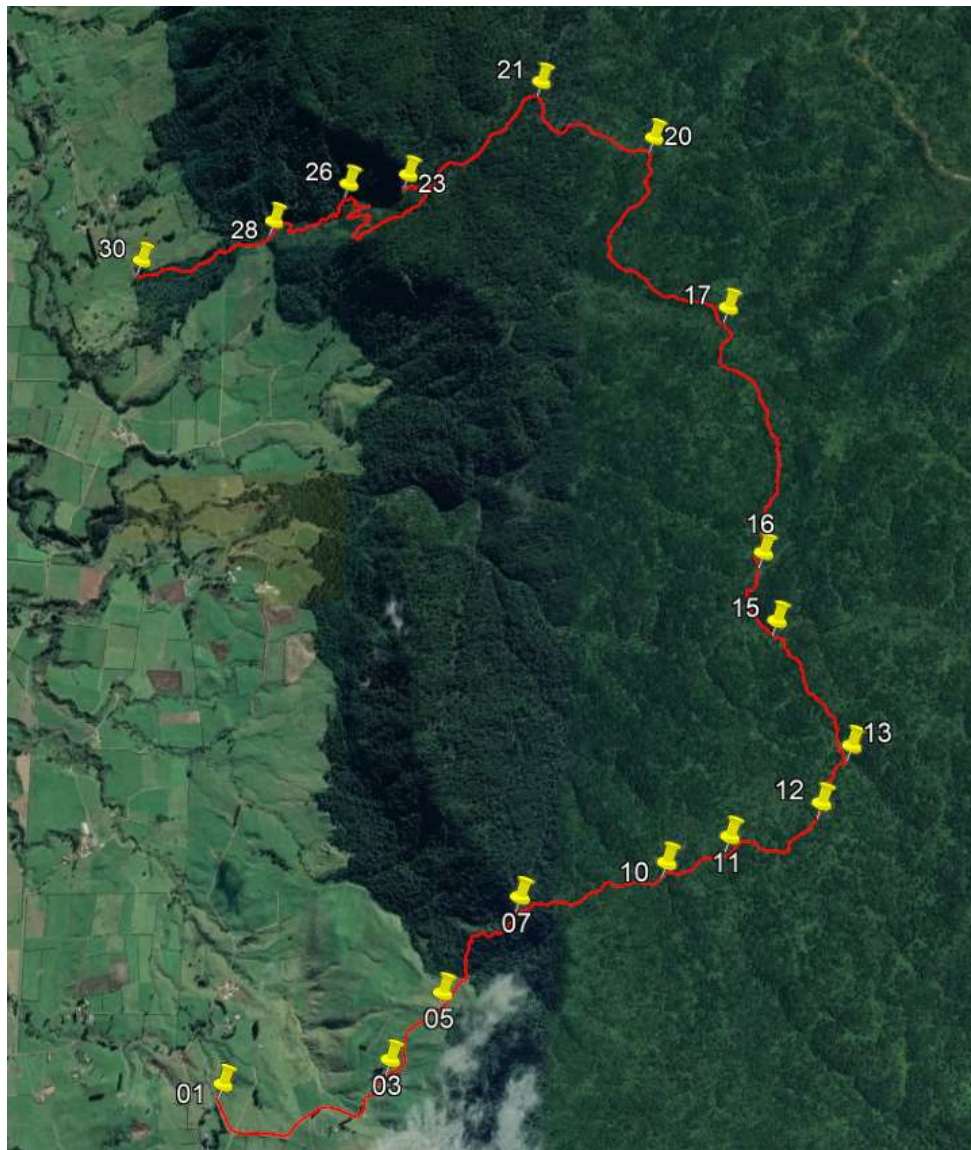


### The staircase



More detail on and photographs of this section of the tramp can be found in the tramp note titled “Wairere Falls” where the tramp was the ascent to and descent from the top of Wairere Falls from the Goodwin Road car park.





Name	Eastings	Northing	Alt...	Description
01	1852813	5815171	132	Car park at end of Te Tuhi Road
02	1853374	5815134	191	17min (765m); over stile on gated gravel road just past T-junction then follow fence line not road
03	1853664	5815271	236	24min (1.16km); cross gravel road to stile and uphill
04	1853771	5815484	280	31min (1.46km); cross another stile
05	1853932	5815586	311	35min (1.64km); "grunt" through gate on to track going left towards forest
06	1854077	5815752	301	40min (1.88km); steep down to stream then enter forest going steeply upslope
07	1854335	5816036	456	1hour (2.48km); "grunty" walking, small track entering from LHS
08	1854463	5816079	513	1:08min (2.68km); slight easing in the slope but still a bit of a grunt
09	1854575	5816080	532	1:13min (2.81km); almost level with large mossy log for tea stop
10	1855057	5816178	507	1:44min (3.41km); easy stream line crossing
11	1855365	5816293	503	1:55min (3.79km); stream line crossing then left and upwards
12	1855814	5816440	500	2:12min (4.40km); stream line crossing
13	1855971	5816715	474	2:21min (4.74km); track junction - go left to the North
14	1855932	5816824	470	2:26min (4.86km); stream line crossing
15	1855621	5817349	433	2:43min (5.58km); wider stream crossing, not deep
16	1855564	5817690	454	2:55min (6.04km); stream line crossing then steeply upwards to lunch spot at 3 hours walking
17	1855418	5818961	455	3:59min (7.79km); river crossing, not too deep and easy
18	1855028	5819754	439	4:27min (9.08km); small valley with track obscured by windfalls, go right downslope in valley
19	1855055	5819816	431	4:32min (9.24km); small stream confluence then cross stream and upslope
20	1855053	5819901	432	4:34min (9.30km); marker post at track junction - go left
21	1854469	5820228	421	4:54min (10.17km); marker post at N-track junction; head SW
22	1853881	5819746	415	5:17min (11.09km); T-junction with right to Wairere Falls viewpoint
23	1853763	5819765	407	5:19min (11.2km); Wairere Falls upper view platform
24	1853511	5819512	402	5:32min (11.85km); T-junction on left to Old (Maori) Trail - not advised
25	1853560	5819717	272	5:49min (12.45km); lower view platform
26	1853416	5819785	199	5:54min (12.64km); bottom of massive wooden staircase
27	1853313	5819689	175	5:59min (12.87km); boardwalk below wet, dripping bluffs
28	1852997	5819624	140	6:08min (13.33km); bridge
29	1852767	5819564	96.0	6:13min (13.6km); T-junction on left with lower / exit of old (Maori) trail then edge of meadow
30	1852267	5819459	51.0	6:22min (14.15km); small bridge just before car park on Goodwin Road

**Notes:**

- **GPS** = Garmin GPSmap 60CSx
- **WP** = Waypoint as taken by GPS unit
- **masl** = metres above sea level