

TUI MINE and Te AROHA TRIG

Topo50 Map: BC35 Paeroa

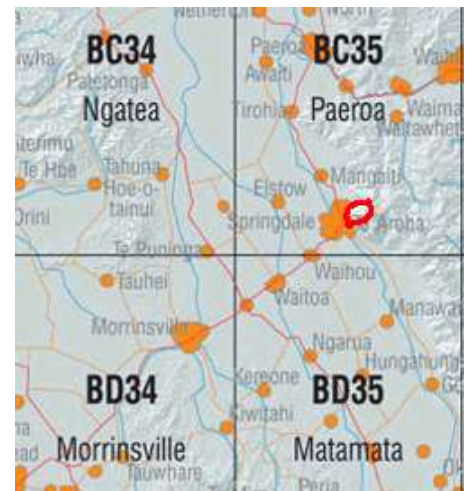
GPS: NZTM and WGS 84

How to get to START: Starting point is Te Aroha which is about 2 hours' drive north-east of Taupo. The access route is virtually all on main roads using SH1 up through Putaruru then due north on SH27 from Tirau. Pass through Matamata and Wahora on SH27 then turn off right after crossing the twin railway tracks on to Wardville Road and then picking up the well signposted road for Te Aroha. In Te Aroha follow the signs off SH26 for the Domain and park near the hot pools (**WP01** 31masl).

Rough description: A hard circular tramp of around 6 hours covering 13.5km with over 900 metres of ascent and descent from the Domain in Te Aroha, up past the Tui Mine then over Te Aroha Summit with its giant communications mast and back down to the Domain.

Detail: From the road in the Domain find the track going up the side of the Hot Pools, there are quite clear signs as you "hit the hill" on this wide manicured tourist track with signs for the Tui Mine and Tui Mine Track.

After 10 minutes quite steeply uphill go straight at a track junction (**WP02** 75masl) and 5 minutes later meet a motorable (**WP3** 79masl) track; continue uphill on the sign-posted track soon to pass the town's water storage tanks and a road to get back on the walking track. This area is riddled with walking tracks, bike tracks and motorable tracks so keep an eye open for all track signs – these can be difficult to spot as they are all rather small and not the normal large, easy-to-spot DoC signs.



The tramp can be seen above as the **RED** line.

After a couple more track junctions the path does become more of a back-country track suited to trampers' needs and some care is needed as there are a lot of steps and they are constructed using rounded logs with chicken-wire but these logs are lethally slippery when wet. After 45 minutes go right at a Y-fork (**WP6** 127masl) and soon pass under a suspended water pipe – if you do not see this pipe overhead then check back at the last junction and try again. Fifteen minutes later cross the stream line directly below a concrete wall (**WP7** 161masl) which has the stream dammed behind it. This is a good point for a refreshment break as from here on the slopes increase quite dramatically and there are quite a few hefty "grunts" as you get up the hill.

In about 90 minutes meet a contour track at a T-junction (**WP08** 291masl) – this is signed Tui Track to the left and a Look-out to the right, go left on the contour and soon after passing over a bridge go right uphill on a smaller way-marked track (**WP09** 267masl).

After a lot more uphill work there is an indistinct minor crest (**WP10** 384masl) then the track descends to a junction where, going right, there is a small waterfall whilst the route goes left.

Area Devastated by mining

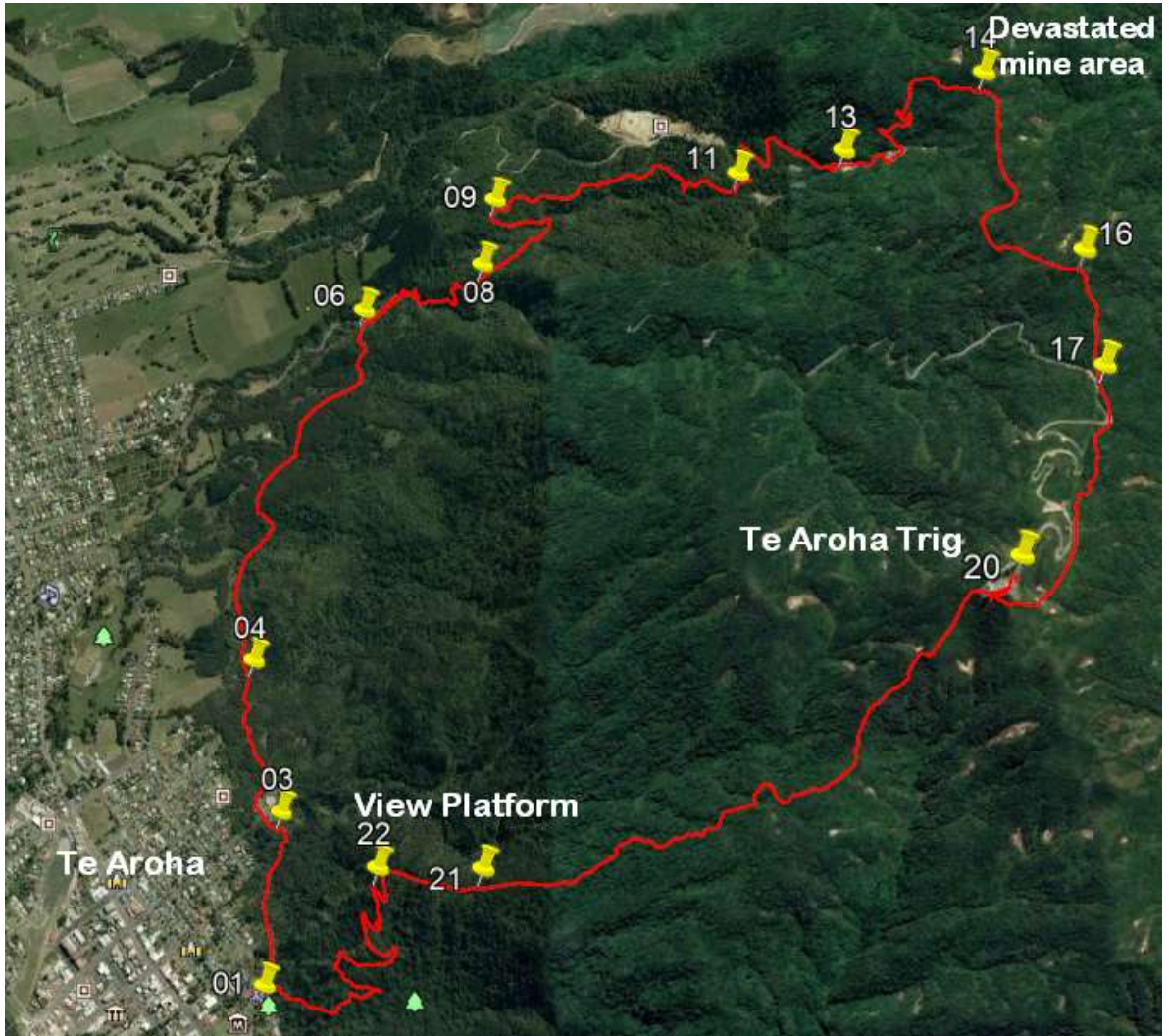


Stream eroded by mining



Soon the track crosses a wide gravel road (**WP11** 421masl) then continues till it comes into the open at a major junction where several gravel roads meet (**WP12** 435masl) and the track continues northwards upslope. Around 2:30 minutes a spur road is noticed down to the right where the damage done to a stream line by mining activities can be studied (**WP13** 507masl) before grinding up the next part of the track which is very rough. Once the track passes through a landscape devastated by the mining and covered with various artifacts, such as lumps of old iron and sections of rail, the track improves and a small minor crest is reached (**WP14** 708masl). Soon a rolling, more-open area with low bush plus trees is reached – if the weather is good then views from here are reportedly good.

A small branch off the wide open track (**WP16** 777masl) makes a good target for lunch then soon after this there is a cheering notice (**WP17** 768masl) advising that the summit of mount Te Aroha is only one hour away – all uphill! After about 4 hours or so some wooden steps (**WP18** 897masl) lead up into the open close to the gravel road and the summit.



Name	Easting	Northing	Alt...	Description
01	1839949	5841293	31.1	Park at hot pools on Te Aroha Domain
02	1840028	5841734	75.0	10min (537m); steeply uphill to T-junction and straight for Tui Mine Track
03	1840010	5841816	79.0	15min (661m); meet motorable track, follow Tui Track up past water tanks and over road again
04	1839918	5842285	84.0	22min (1.21km); major tracks junction, go upwards then left
05	1839893	5842478	96.0	25min (1.42km); yet another track junction, go straight heading north
06	1840257	5843372	127	45min (2.57km); Y-junction, go right in woodland passing under suspended water pipe
07	1840451	5843456	161	1hour (3.23km); cross stream line directly below concrete weir then start major grunt upslope
08	1840662	5843466	291	1:30min (3.74km); meet Tui Track & Look-out sign after 15 mins grunt on fair track
09	1840699	5843672	267	1:40min (4.27km); on contour path after crossing bridge go off uphill, right on smaller track
10	1841285	5843749	384	2 hours (4.98km); crest on track with orange triangular markers then down to junction, go left.
11	1841476	5843676	421	2:08min (5.26km); exit to gravel road, go straight-over back on to track
12	1841496	5843744	435	2:15min (5.40km); track and info signs at road junction - continue northwards
13	1841805	5843706	507	2:25min (6.02km); spur road down to the right for view of old mine works and very eroded stream line
14	1842237	5843852	708	2:55min (6.92km); after damaged mine area reach small crest in wet woodland. Down & right at Y fork
15	1842421	5843314	780	3:15min (7.72km); into more open rolling area with low bush and trees. Views if good weather
16	1842513	5843293	777	3:30min (7.81km); lunch spot in semi open where track sign indicates off right from wider track
17	1842561	5842957	768	3:45min (8.18km); cross roads with sign indicating straight ahead with summit of Te Aroha at 1 hour
18	1842393	5842341	897	4:10min (8.89km); wooden stairs then into the open below the road very close to summit
19	1842249	5842345	953	4:45min (9.06km); exit from Dog Kennel Flats track on to road below Te Aroha mast
20	1842318	5842388	961	4:55min (9.18km); Te Aroha Trig and indicator table for views
21	1840706	5841615	382	5:35min (11.48km); T-junction on continuous descent with right for Horseman's Track. Go straight
22	1840378	5841629	325	6:15min (11.93km); platform overlooking Te Aroha before serious, never-ending zig-zags to Domain



There is now some rough walking almost on the contour with a fair number of rocky outcrops slowly gaining height till the track exits from the Dog Kennel Flat track (no flats were seen whilst coming up this track) on to the road (**WP19** 953masl) below the Te Aroha communications mast. A short stroll upslope from here gets to the Te Aroha trig from where even the South Island can be seen on a good day. After this it is back down the access road to pick up the track sign-posted "Te Aroha Domain 90 minutes". From here it is relentlessly downhill with few notable features, apart from the tricky bits, until a track junction is arrived at (**WP21** 382masl) where the route goes straight ahead whilst the right is labelled the Horseman's Track. Thirty to forty minutes further on there is a viewing platform with good vistas over Te Aroha town then there is a series of never-ending zig-zags back down to the Domain at the spot where the walk started at the Hot Pools.

The whole walk takes between five and a half to six and a half hours depending on walking speed and fitness.

Notes:

- **GPS** Garmin GPSMap60 CSx on WGS84 and NZTM
- **WP** = Waypoint as taken by GPS unit
- **masl** = metres above sea level

