

TUKINO STREAMS

Topo50 Map: BJ35 Waiouru

GPS: NZTM on WGS84

How to get to START:

- Leaving Taupo go down the lake through Turangi on to the **Desert Highway** passing the turn offs to Waihohonu, Umukarikari and the road quarry on the left.
- Exit the Desert Highway as shown below on the right hand side on to the **Tukino Access Road** – taking note of the signs at the start about 2 wheel drive vehicles.
- Follow the gravel road and avoid going left at any point as this leads into Army territory. Variants of the road weave around a little bit but follow the poles.
- The **2 wheel-drive car park** is reached in 15 minutes and another 20 minutes is needed to get up the **4 wheel-drive** track to the repeater station with masts; but stop a short distance before the communication masts. Driving time from Taupo is 1:45 minutes.
- Park on the gentle crest (**011324masl**) on the RHS of the road as and prepare to walk off-road in a NW direction.

The vehicle should then be moved by someone else to the pick-up point on the Desert Highway about 500m south of Rangipo Intake Road (see **WP10** on the map).

The route to the start can be traced in opposite with the access road off **SH1** being shown as a blue line running up to Mount Ruapehu in the upper middle of sheet BJ35. The red line is the tramp route.

Rough description: An easy walk of 4 hours including coffee / tea stops and lunch break. The route starts off cross-country northwest-wards heading towards Ngauruhoe then goes north on the Round-the-Mountain track to cross the bridge over the Mangatoetoenui stream. The rest of the walk is off-track traversing parallel to the stream heading ENE then ESE and finally NE to the Desert Road.

Detail: The drive from the middle of Taupo to just below the communications masts on the Tukino Access Road takes about 1:30 to 1:45 minutes. The place to park is shown on the map (**011324masl**) and, despite being beyond the 2-wheel drive car park, is normally easily accessible by most cars and vans so 4-wheel drive is NOT an essential requirement.

The highest point on this walk is where the transport drops you and turns back; the whole walk is basically a gentle downhill stroll with an overall loss of 340 metres with only minor up-hills en-route and from the GPS data the distance is 10.6 kilometres

From the car park head cross-country NW, basically towards Ngauruhoe, for fifteen minutes when the poled "Round-the-Mountain" track is met (**021299masl**). This section of off-track walking is easy with soft footing and not too many rocks.

Follow this track (NNE) for just on 2km to arrive at the bridge over the Mangatoetoenui Stream (**041217masl**) taking a total of 55 minutes from the start. The track is not manicured but presents no problems.

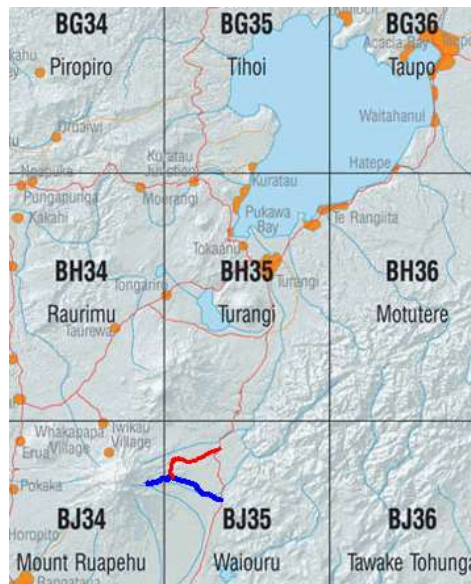
The view of the mountain from the bridge is good with Te Heuheu peak (**2732masl**) being very clear. Cross the bridge, which offers a good refreshment stop, ascend the minor slope then immediately branch right off the track (**051231masl**) and follow the ridge that runs parallel to the stream heading NNE then ESE. There is no track but the walking is easy with good footing through tussock with the occasional sand bar near the stream line.

Mangatoetoenui bridge



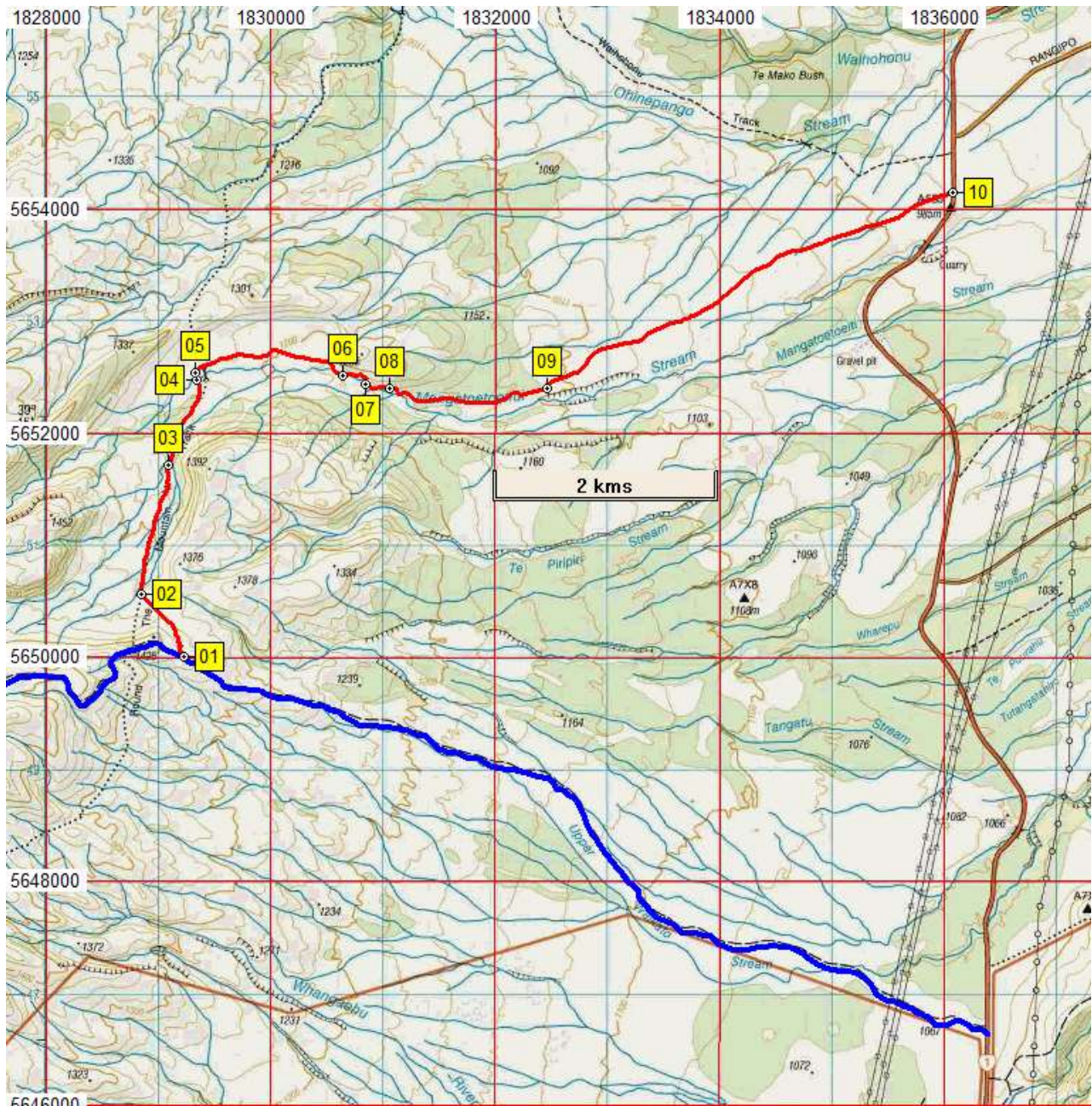
Just short of 2 hours total time (**06**) some small effort and scramble has to be made by going upslope a bit as the slope is a bit steep, rough and narrow near the stream. However within 15 minutes the edge of the stream is again approached (**071166masl**). From here it is necessary to head slightly upslope again into and through an eroded area. A relatively new gully (*it is not indicated on the map at all*) has to be crossed (**081162masl**) at about 2 hours total walk time.

On ascending the far bank of this gully some bush bashing is required and thick scrub vegetation has to be entered to work back down to the stream line. Close to the river the walking is again quite good with river boulders, stones and gravel on a low terrace. This area is quite sheltered and good lunch spots can be found (**091110masl**) after about 2:30 minutes total walk time. From here on it might be necessary to put the mind in neutral and adopt a numb-mind approach since the rest of the tramp is through endless tussock and lasts about 1hour to 1:15 minutes over the 4km involved.

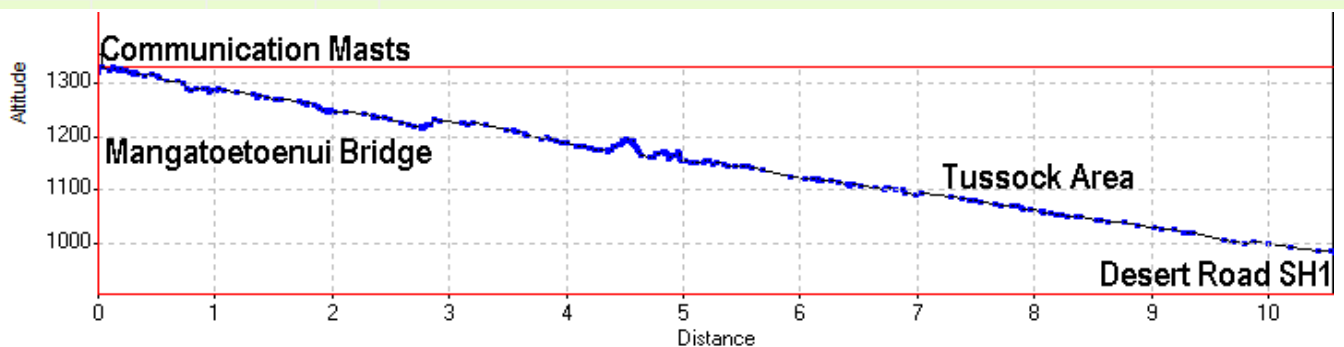


Start point is on crest behind





Name	Easting	Northing	Alt...	Description
01	1829227	5650004	1324	Park on RHS Tukino Access Road just below communications masts. Cross country on NW bearing
02	1828845	5650561	1299	15min (721m); meet Round the Mountain Track after walking off-track to NW
03	1829085	5651715	1249	30min (1.95km); NNE on Round the Mountain Track, easy but rough walking and on river edge
04	1829341	5652477	1217	55min (2.76km); mid-bridge over Mangatoetoenui Stream
05	1829318	5652547	1231	57min (2.88km); just after bridge, turn right off track and go E on ridge parallel to stream
06	1830650	5652520	1173	1:55min (4.35km); head upslope on true left bank as slope too rough / narrow near stream
07	1830846	5652449	1166	15min (4.63km); on slope then back down to stream line, head NE up through eroded area
08	1831059	5652399	1162	2:05min (4.88km); cross large gully then head into thick bush back down to stream
09	1832461	5652403	1110	2:30min (6.43km); lunch on slight rise then NE in tussock all the way to the Desert Highway
10	1836078	5654149	984	4:15min (10.57km); Desert Highway at solar powered road warning signs





The eroded area



Ruapehu view

Tracking basically NE (40° N magnetic) through the tussock meets the Desert Highway (10984masl) at the solar powered warning signs displaying the message "Road Closed - Flash Flooding" which is a few hundred metres south of the start of the Waihohonu Hut track and the Rangipo Intake road. Total walking time at an easy pace is around 4 hours including refreshment and photo stops.

New active gully



Notes:

- *GPS* Garmin Summit
- *WP* = Waypoint as taken by GPS unit
- *masl* = metres above sea level)