

# WAIORA KAURI TRAIL – Coromandel

Topo50 Map: BB35 Hikuai

GPS: NZTM on WGS84

## How to get to START

In Thames turn right at the Toyota site and follow the road up the Kauaeranga Valley for approximately 13 km eastwards to the Kauaeranga Education Camp (WP1) which is about 7km up-valley from the information centre.

From the camp turn right on the gravel road for 50 metres to a Y-junction. Turn right uphill through the gate then pass up through the tent camp site on gravel road to find entrance to footpath at the top.

The location of the tramp is indicated and labelled opposite and can be seen as a red line near the top of sheet T12.

**Accommodation:** First rate accommodation at the Kauaeranga Education Camp hut with several dormitories, separate ladies and gents shower and toilets, gas fired hot showers, gas cooker with sufficient pots and pans (plus a toaster), huge efficient open fire with firewood supply and solar lighting throughout.

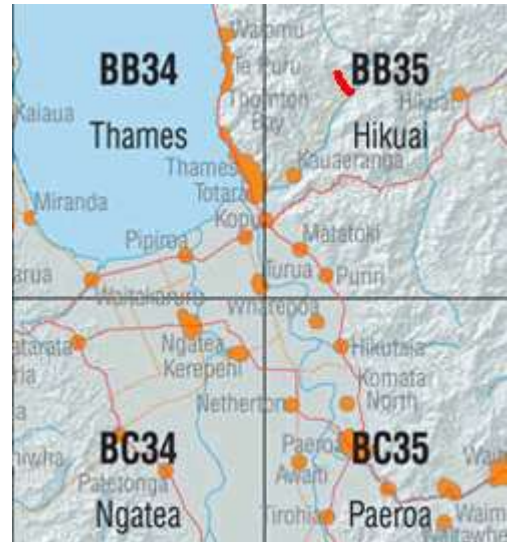
**Rough description:** An easy, three hour round trip to large Kauri tree with eight river / stream crossings – dry in the dry season. Overall there is an altitude gain and subsequent loss of about 290 metres with climbs on a steep, sometimes rocky path.

**Detail:** Leave Education Camp Site (WP1 <sup>134 masl</sup>) on to the road, go right and right again at a Y-junction (WP2) and through a gate and into tent camping area.

### Base camp



## Location



### The hut



At the top of the gravel road enter the woods on clearly marked Wainora Kauri footpath. The path is rough and rocky in places and there are several river / stream crossings on stepping stones – feet remain dry unless there is high water flow. The total distance to reach the tree is, as measured by GPS, 3km so the round walk is a fraction over 6km in total requiring between 2 – 3 hours walking.

### Kauri tree

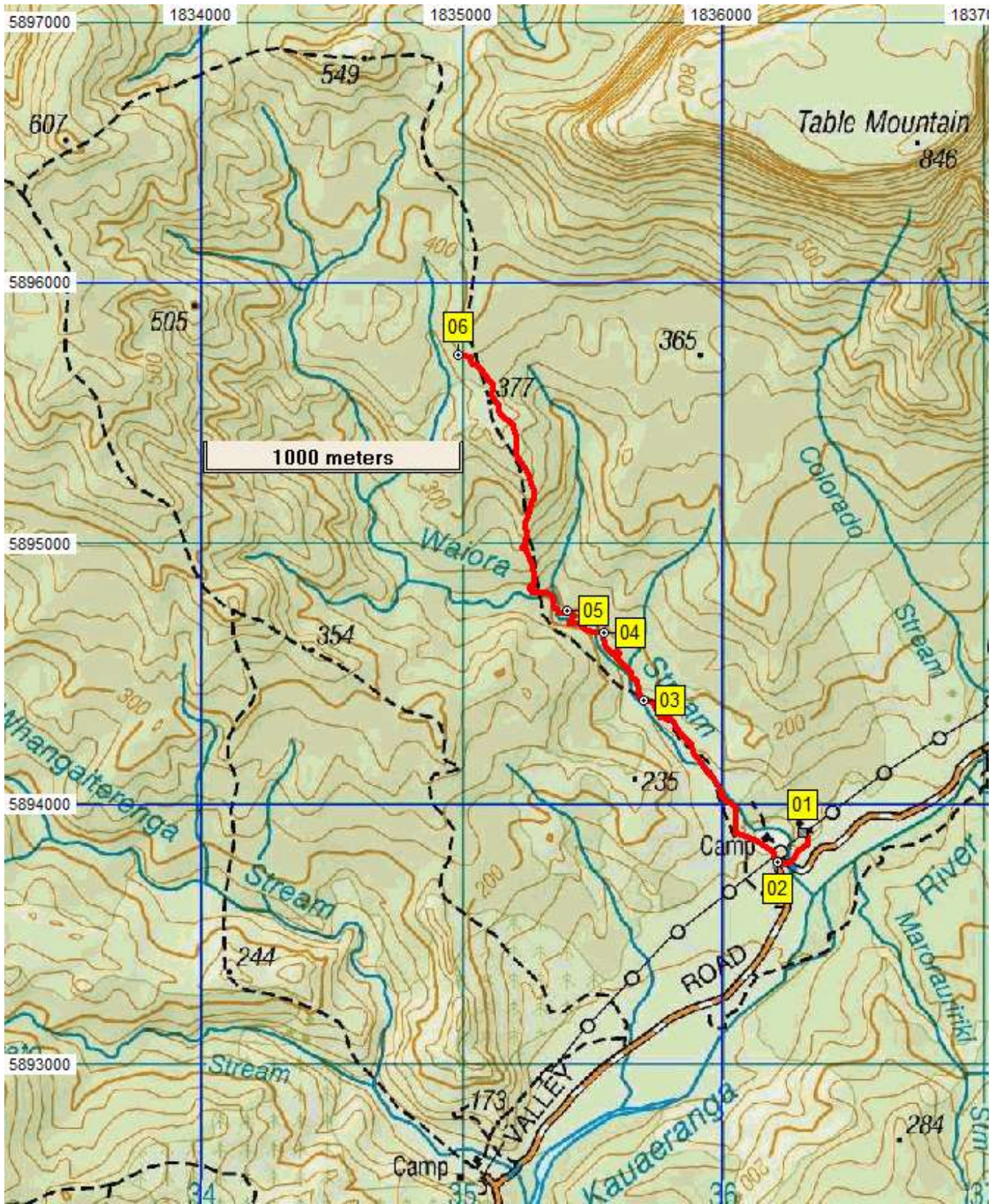


The vegetation is very varied in this area having, in addition to the Kauri:

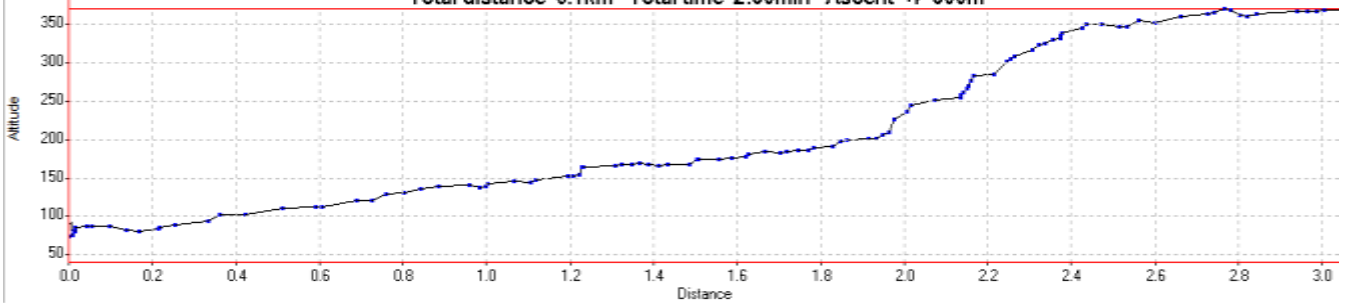
- Totara
- Kamalui
- Tawa
- Matai
- Rimu
- Manaka
- Red Beech
- Ferns of various sorts

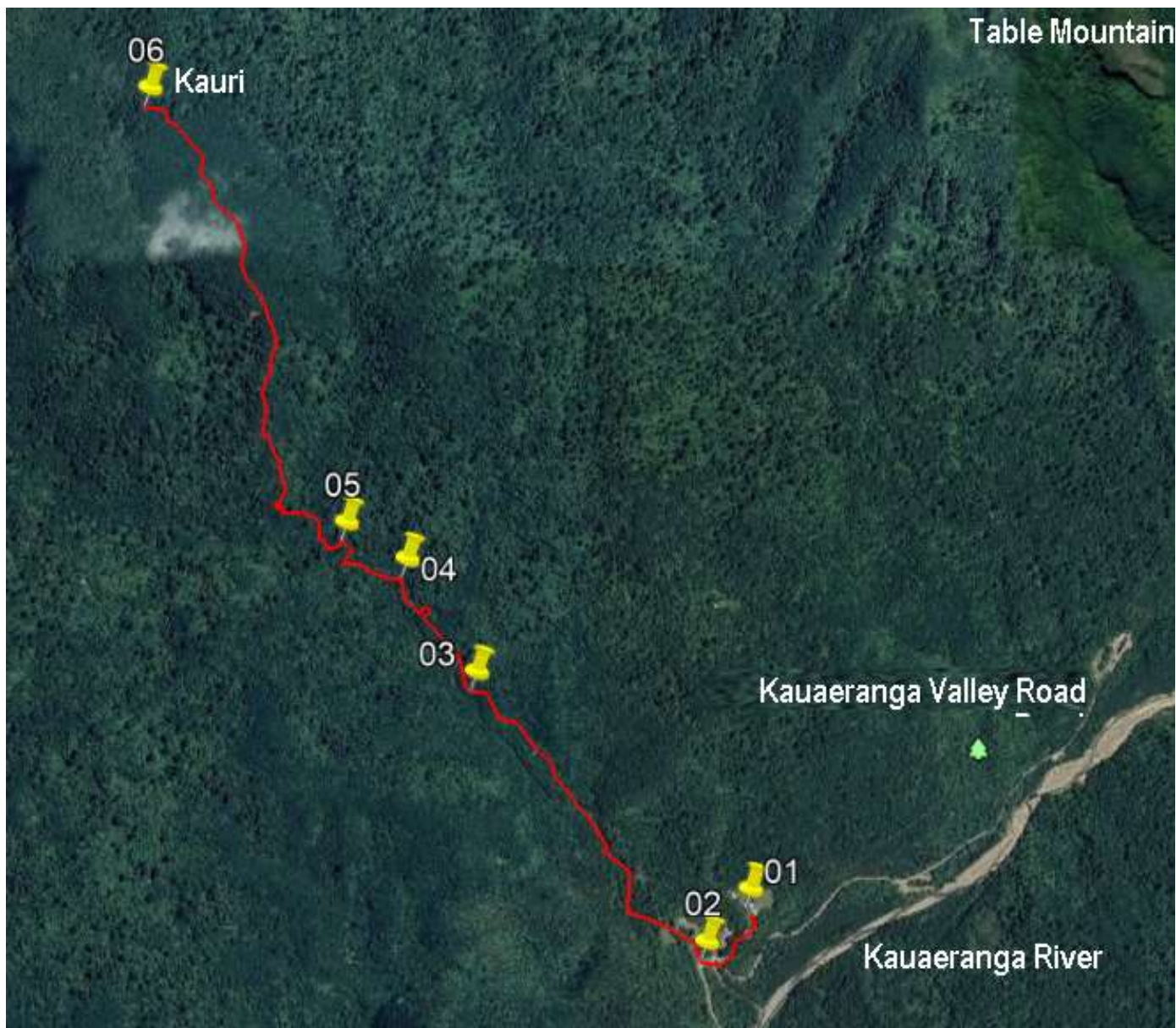
### Kauri hugging





Total distance 6.1km Total time 2:50min Ascent +/- 300m





Name ▾	Easting	Northing	Alt...	Description
01	1836310	5893893	134	Kuaeranga Forest Education Camp
02	1836210	5893780	84.0	5min (220m); Out gate, go right, Y fork go right here and through gate
03	1835700	5894397	144	25min (1.11km); Third stream crossing
04	1835546	5894657	168	35min (1.49km); 5th stream crossing
05	1835406	5894745	183	40min (1.72km); 7th stream crossing
06	1834988	5895727	370	1:25min (3.05km); Kauri Tree, then return same route

**Notes:**

- Garmin Summit GPS
- WP = Waypoint as taken by GPS unit
- masl = metres above sea level