

Waiotahi Track Coromandel

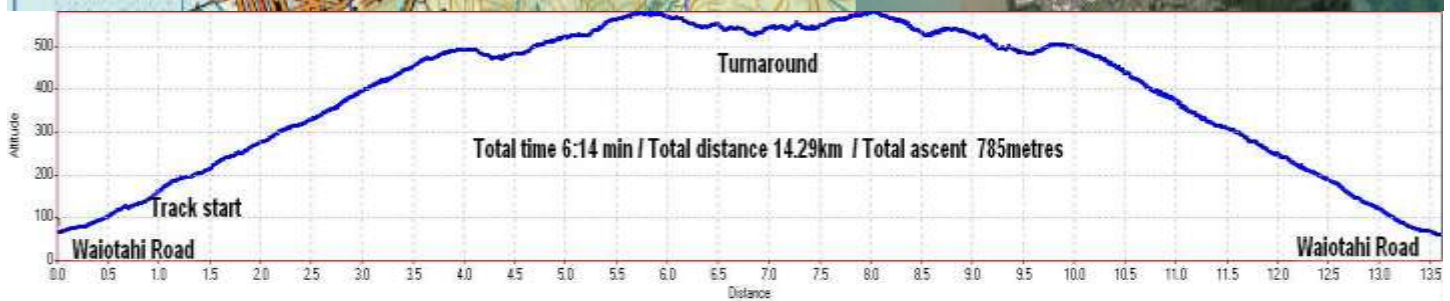
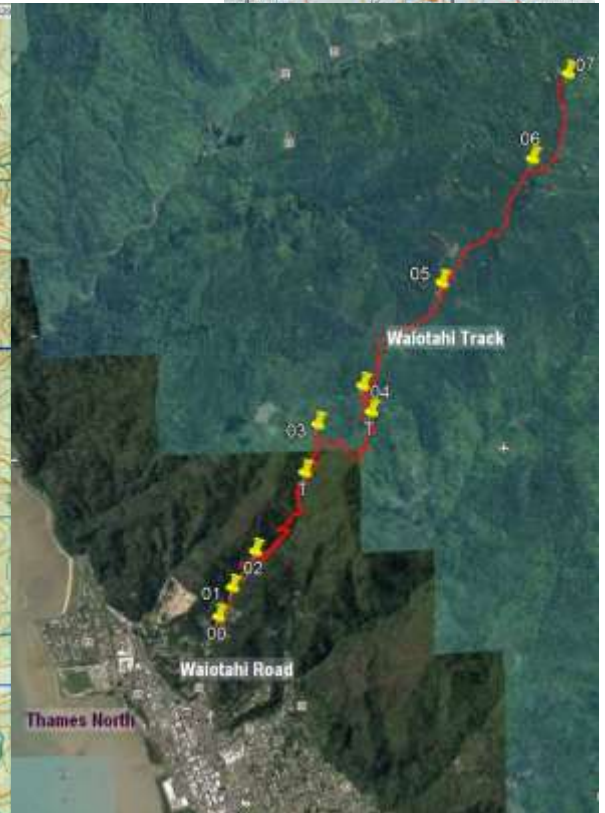
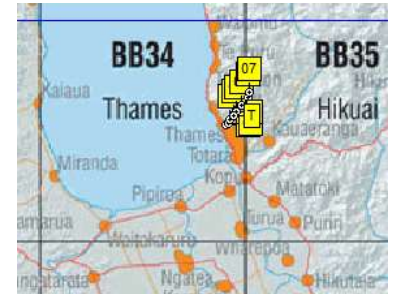
Topo50 Maps: BB34 Thames & BB35 Hikuai

GPS: NZTM on WGS84

How to get to START: As this is well outside the Taupo area the first step is to get up to the southern end of the Coromandel aiming for Thames. Places for a possible stop-over include the Te Puru or the Dickson Holiday Parks both of which are easily located by driving up the coast road from Thames towards Te Puru.

The track walked goes all the way in to Crosbies Hut which takes over 5 hours to cover around 15km. On this occasion a turn-back was made just before the junction to the Karaka Track since DoC advised the Karaka Track was closed. However when the Karaka is open a very pleasant loop walk can be achieved.

The Waiotahi Track can be slippery due to polished yellow clay so be careful on wet days, several old mine shafts can be seen and a few are noted in the waypoints data.



Name	Easting	Northing	Alt...	Description
00	1825894	5887866	66.0	Parking on road 258m beyond track start
01	1826005	5888077	81.1	258metres (5min); Gate at start of Waiotahi Track on sharp road bend
02	1826193	5888334	126	685metres (18min); Junction with left for mini falls - slippery track
03	1826711	5889222	315	2.35km (1:05min); Fast stream at bend in track
04	1827071	5889476	473	3.66km (1:53min); Open views of left then +/- easy level walking
05	1827643	5890169	504	4.73km (2:16min); Bare eroded face on left hand side
06	1828296	5891002	569	6.02km (2:56min); Open views on left hand side
07	1828553	5891596	529	6.94km (3:21min); Metres short of junction with Karaka Track
T	1827121	5889295	435	3.34km (1:45min); Mine tunnel on right hand side
T	1826596	5888888	251	1.8km (50min); Stream crossing then mine tunnel on left

Notes: June 2019 | GPS Garmin GPSMap 62sc | WP Waypoint taken by GPS | masl = metres above sea level | T mining tunnel or shaft