

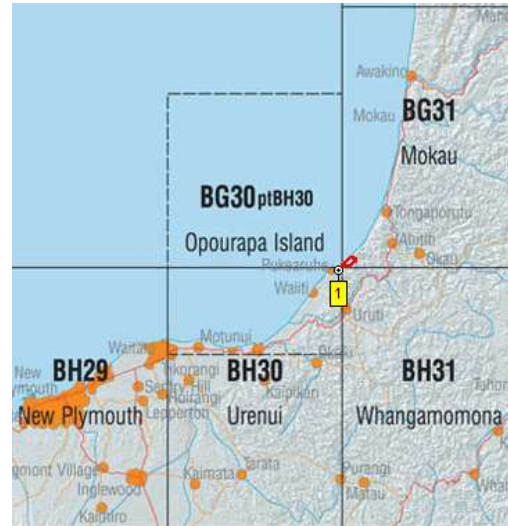
WHITE CLIFFS

Topo50 Map: BG31 Mokau & BG30 Opourapa Island

GPS: NZTM on WGS84

How to get to START: Base yourself in Mokau as for Mount Messenger and just drive down the highway (SH3) then navigate to the coast off the map,

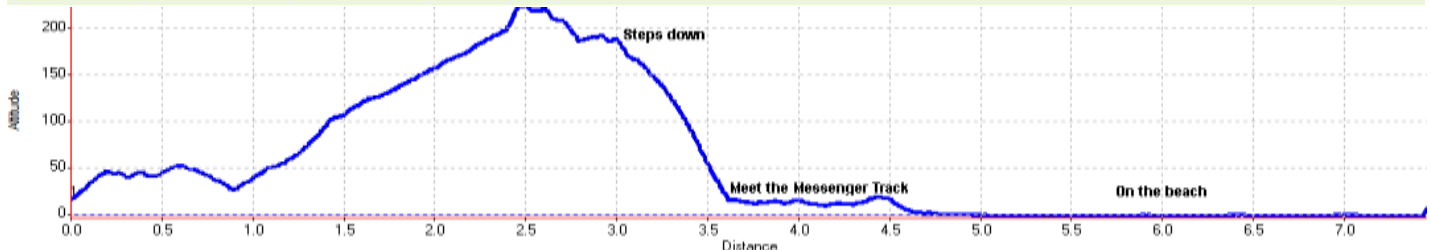
Rough description: A great walk accessible from SH3 south of Mokau in the Taranaki area. Steeply up on road the through paddocks, down 600 odd steps to the beach below stunning cliffs and back to the start point.



The tramp route is the **RED** line. Start point is **WP1**



Name	Easting	Northing	Alt...	Description
1	1731497	5693897	17.0	Park near the end of Pukearuhe Road close to the beach
2	1733976	5695116	195	3.39km (1:33min); Start the massive descent including 600 odd steps
3	1733947	5695294	14.0	3.71km (1:45min); Go left on meeting track from Mt Messenger
4	1733252	5695662	4.0	4.65km (2:04min); On the beach but aim for 2 hours either side of low tide
5	1731418	5694066	7.9	7.47km (3:24min); Back close to start point having walked length of beach



Notes: GPS = Garmin GPSMap 60CSx WP = Waypoint as taken by GPS unit masl = metres above sea level